



Africa
Africa

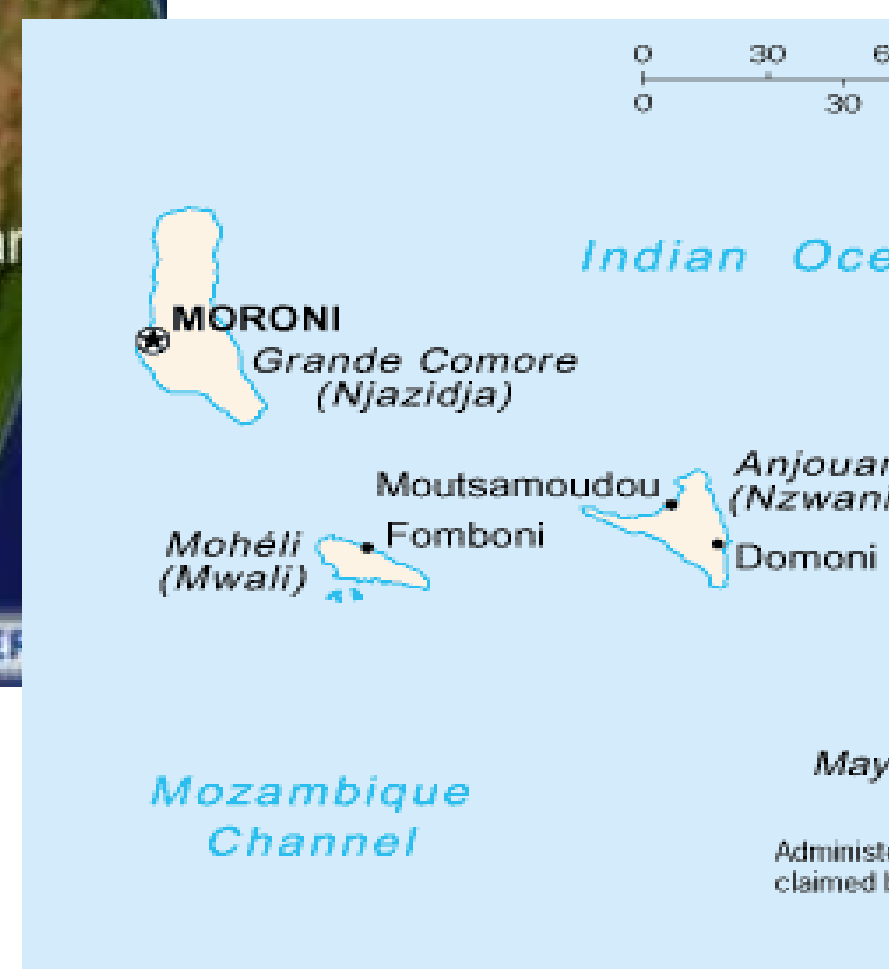
An atlas of the breeding birds of the Comoro Islands

Michel Louette, Danny Meirte, Patricia Mergen, Garin Cael, Bart Meganck

www.parrots.org

Africa

Islands Brace For Possible Lava Flow



Africa eolija

Target : compile info into an atlas with maps
info from various Comoro expeditions,
as early as 1980's

various locality indications :

- GPS (minority)
- map references by name (mostly)
- old maps with unknown “datum”

various types of observation :

- bird counts in transects
- spot observations

Africa ecoliva

-> much work cleaning up dataset :

- retrace transects, georeference points (relative heights, forest/non-forest)

- control : data point swapping

analysis :

- ecological parameters
- interpolation
- SRTM-3 altitude measurements

Africa Africa

chosen grid : 900m horizontally, 50m vertically

per grid cell :

- min/max/mean height
- % surface land/sea
- height differences (cliffs)

from maps :

houses & buildings (contours) -> % human activity

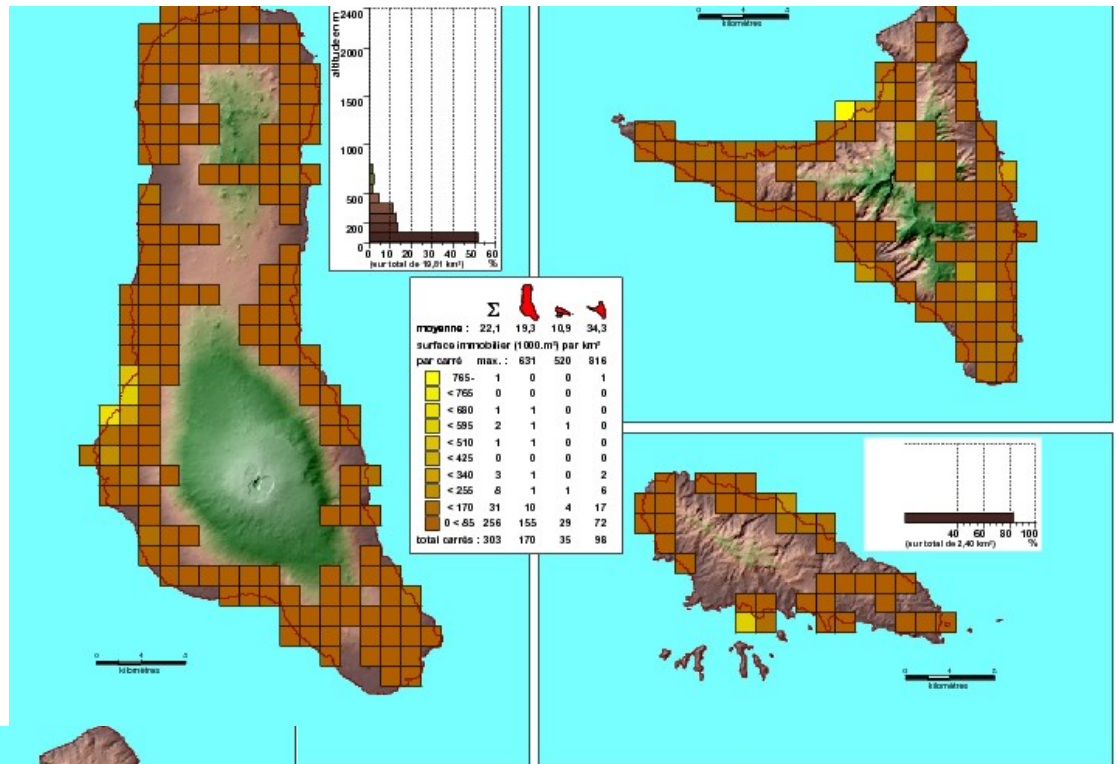
rivers, roads : idem



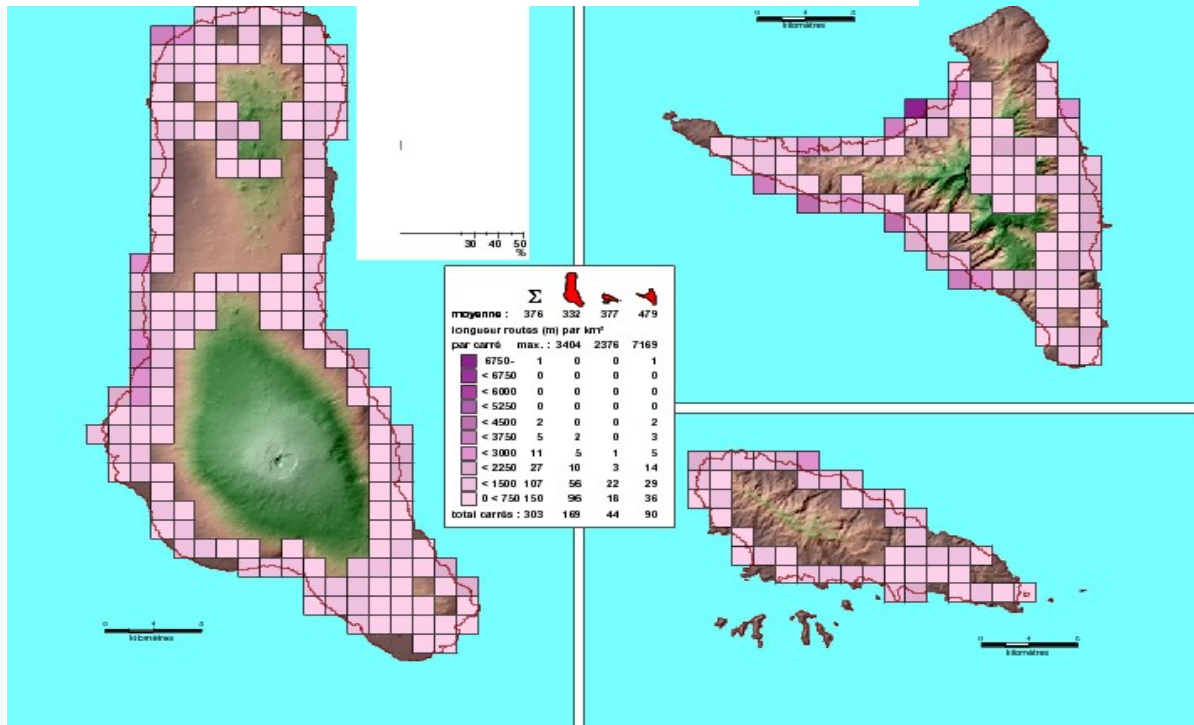
rainfall : isohyets map, interpolation, correction
with actual weather station data

conclusions : zones of maximal importance
(conservation), index of rarity of species

Africa Africa

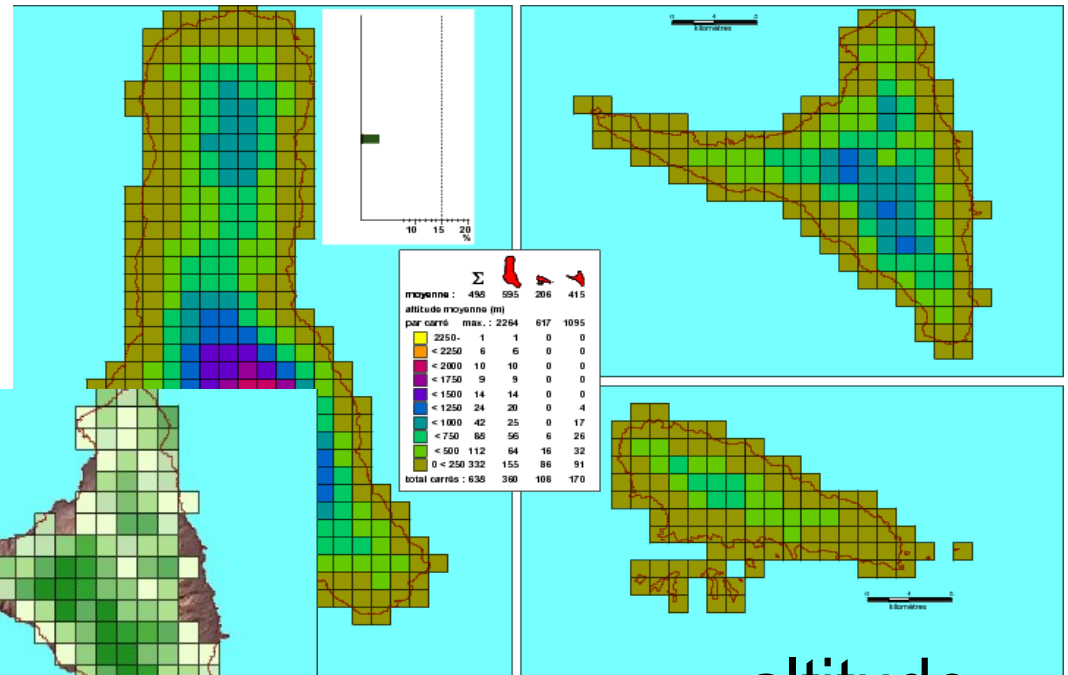


roads

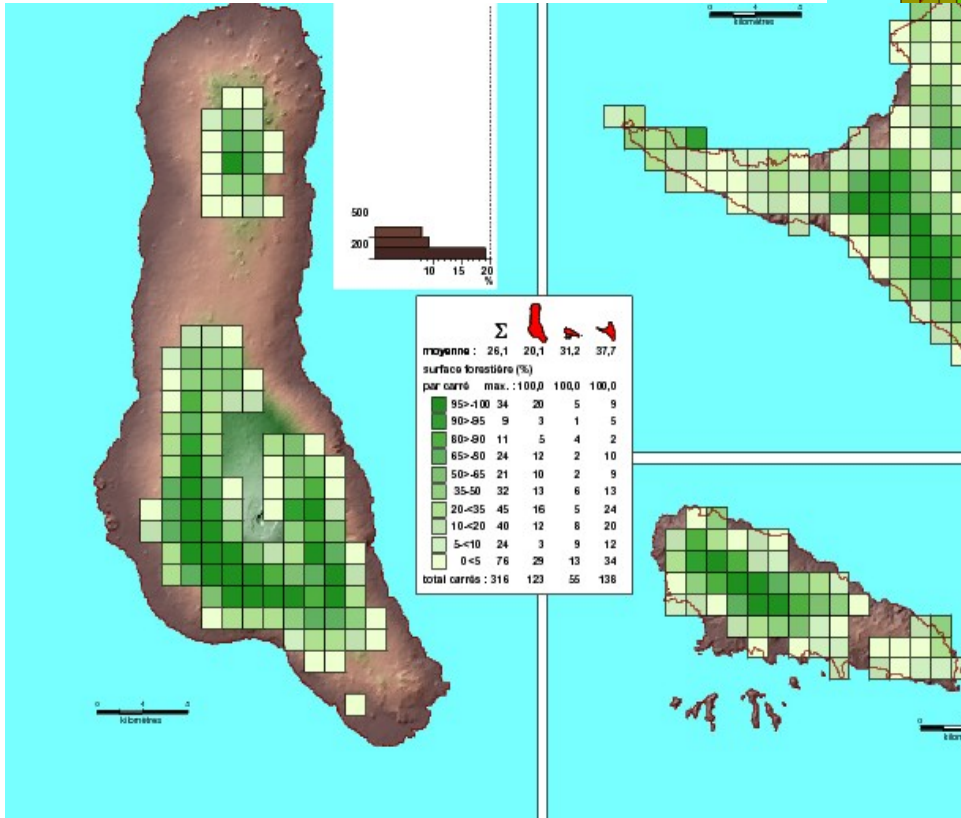


buildings

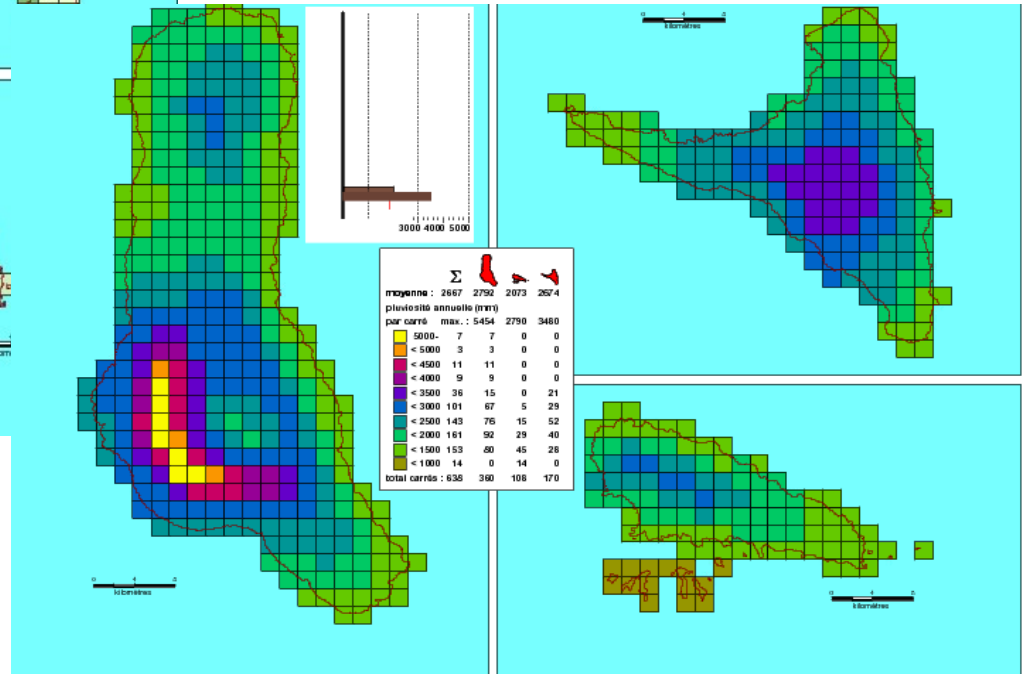
Africa Africa



altitude

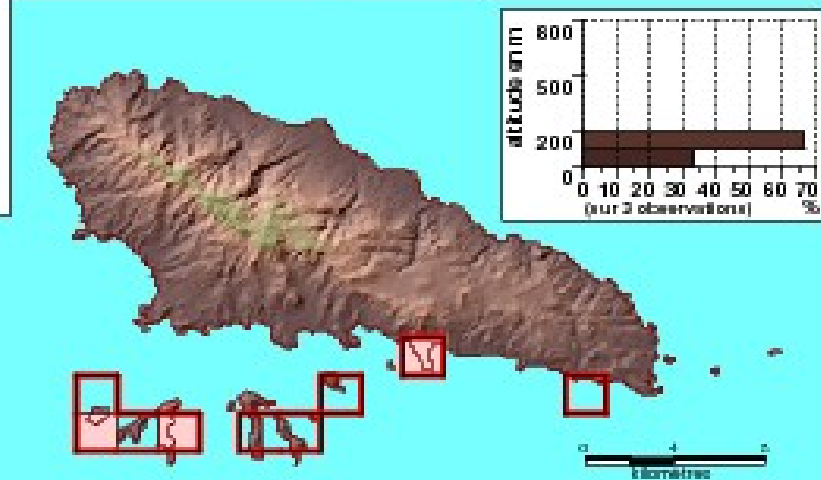
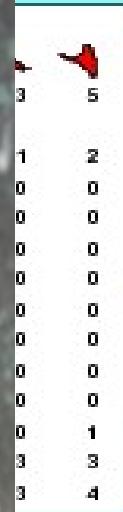
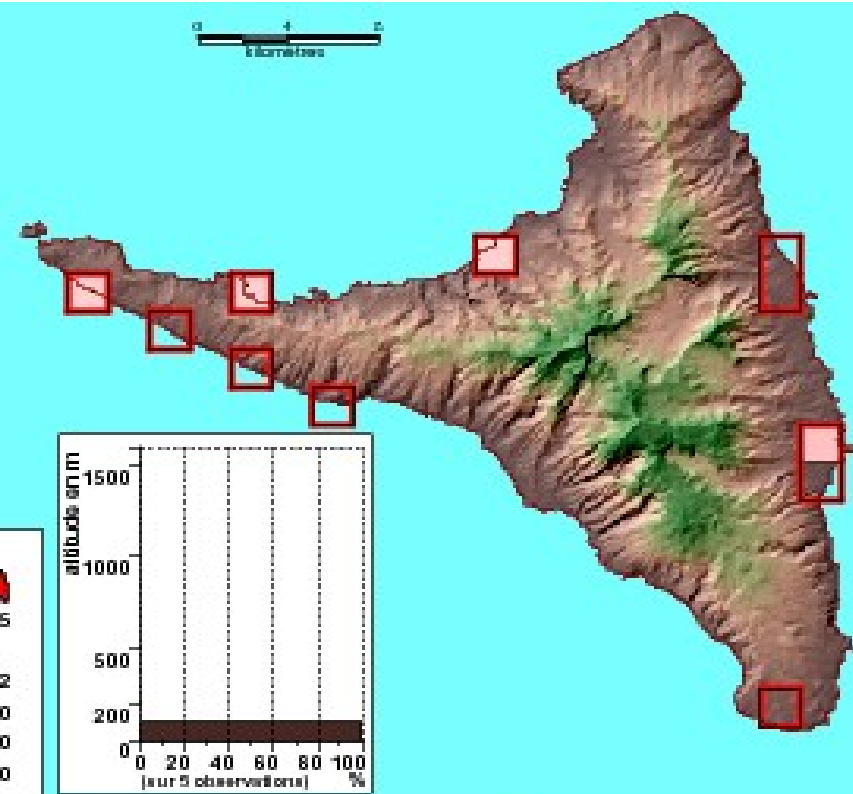
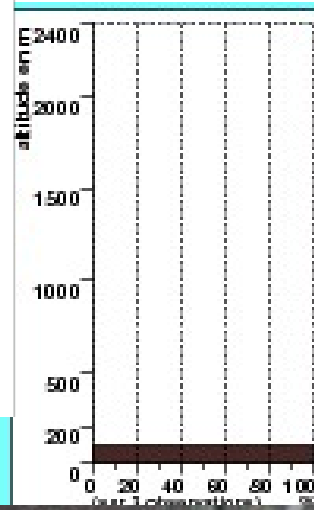


forests



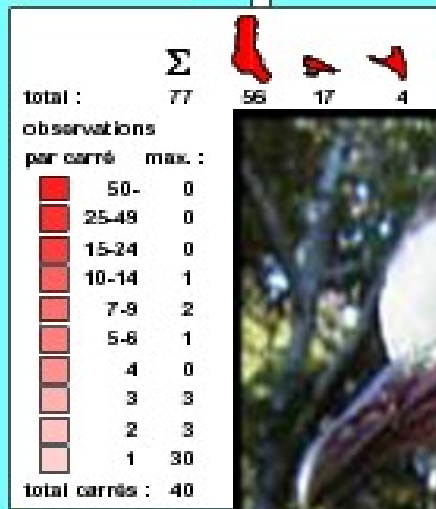
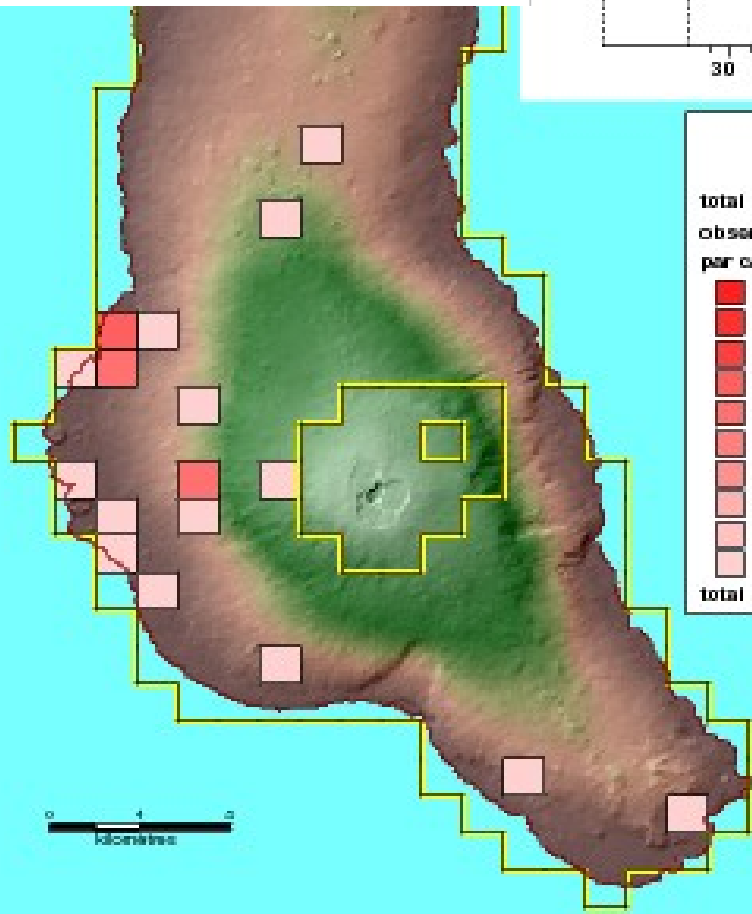
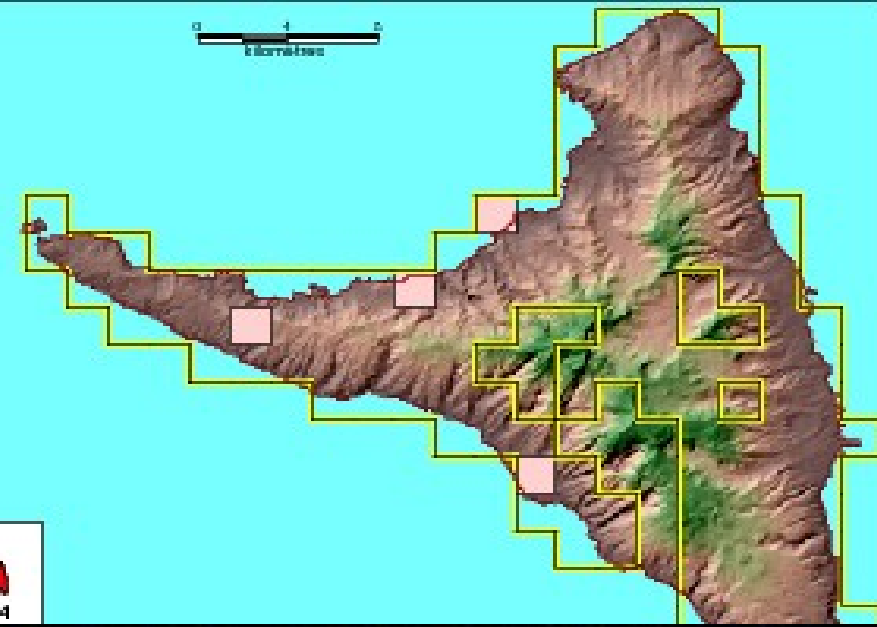
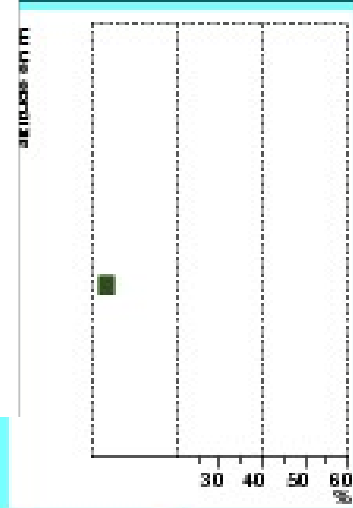
rainfall

Africa



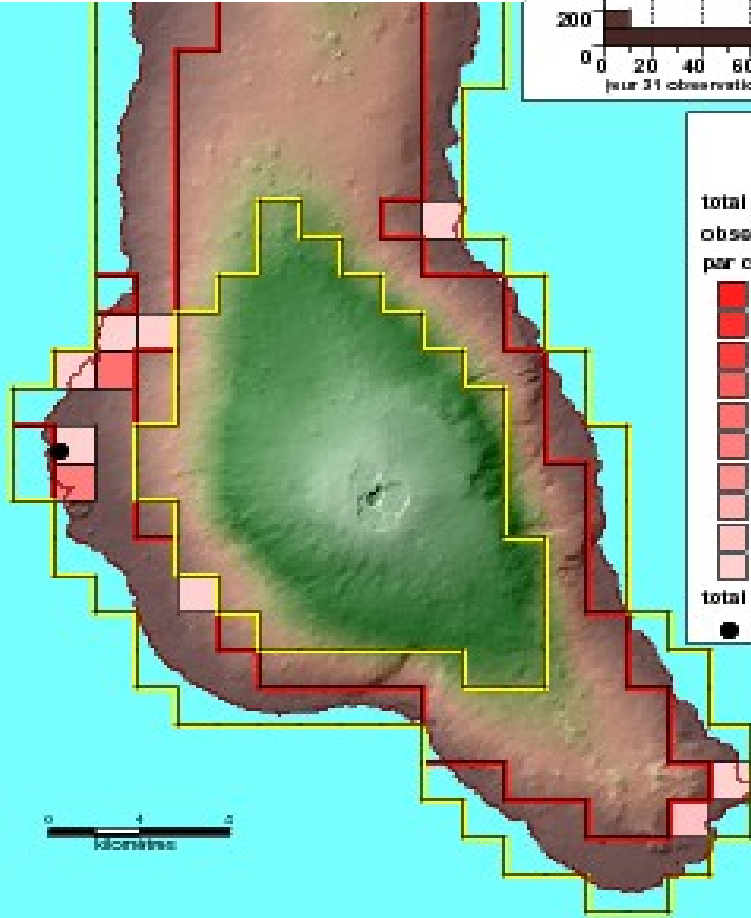
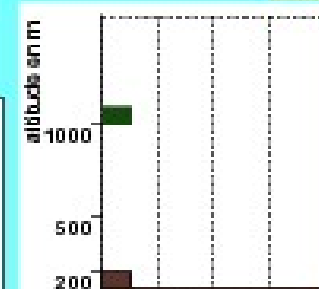
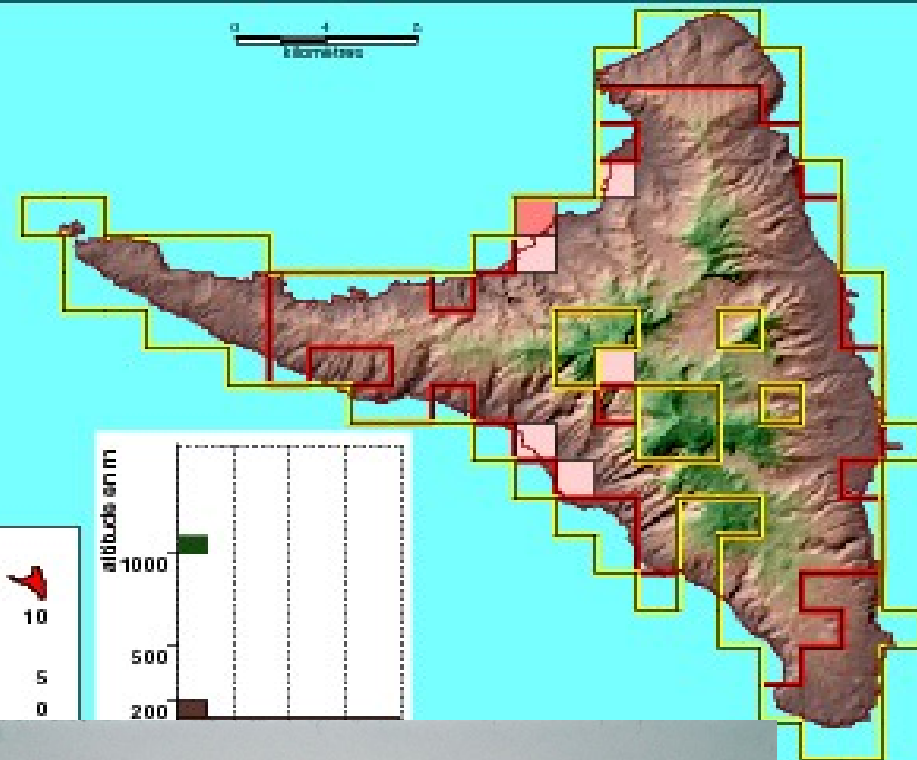
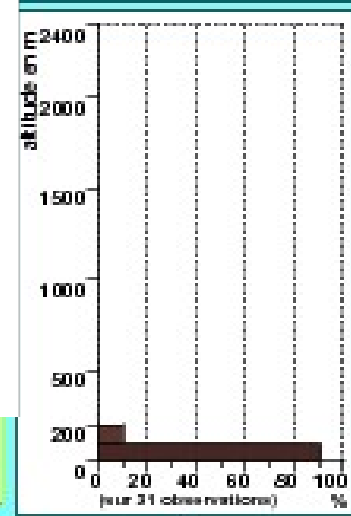
Phaeon lepturus : cliffs

Africa Africa



Turtur tympanistria : woodlands with not much rain

Africa

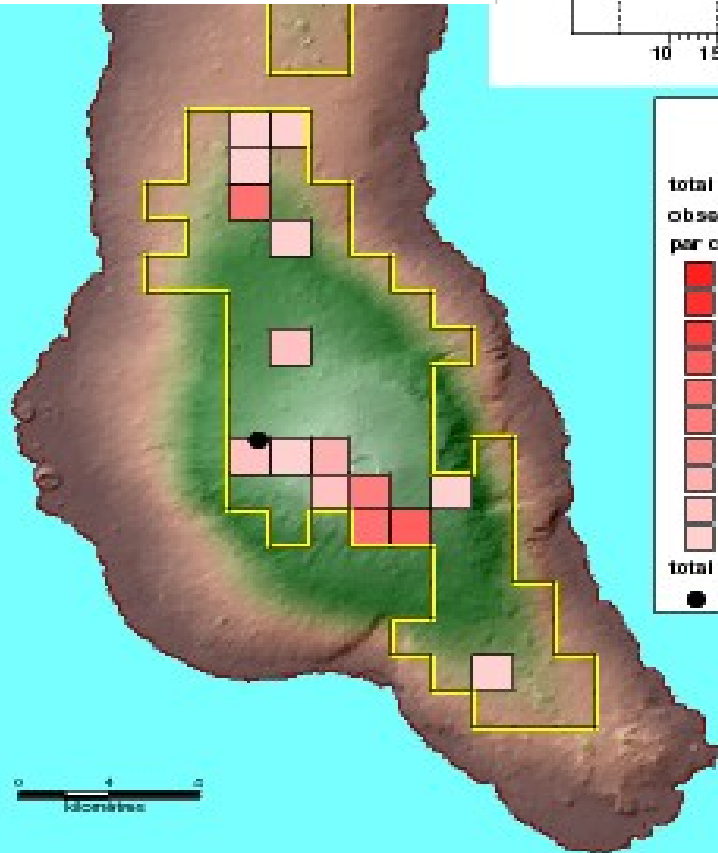
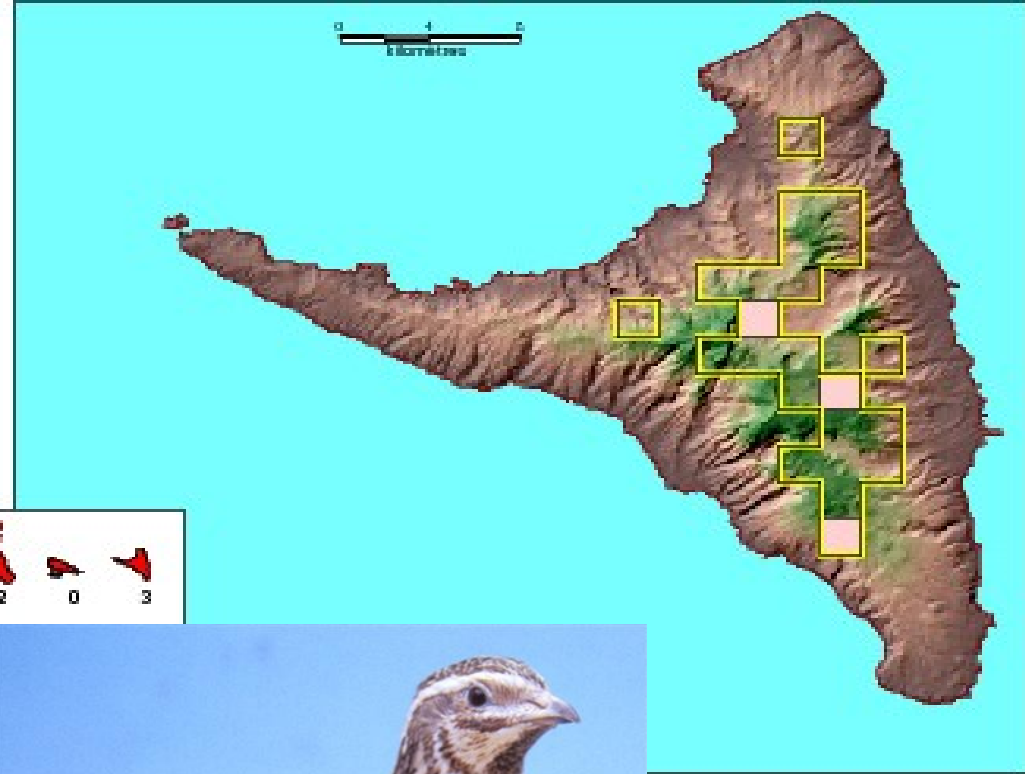
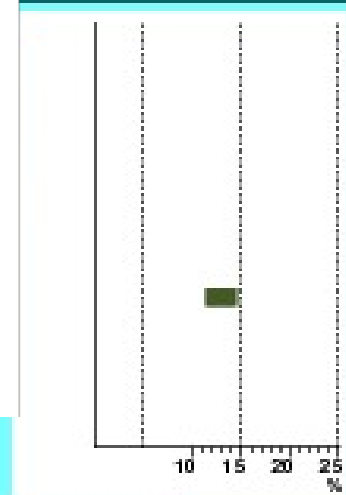


	Σ			
total :	60	31	19	10
observations				
par carré max. :		8	10	5
total carré				
● ni				

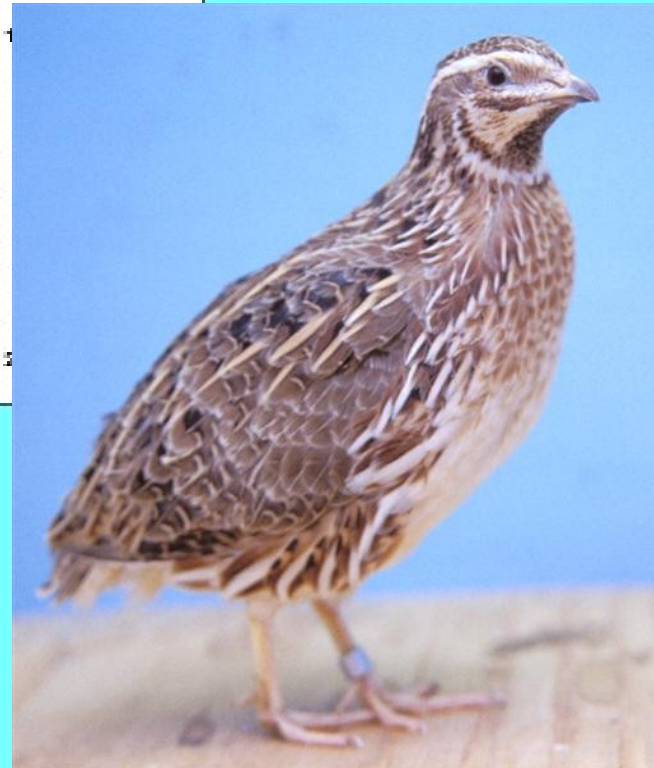


Butorides striatus : coastlands & rivers

Africa Africa

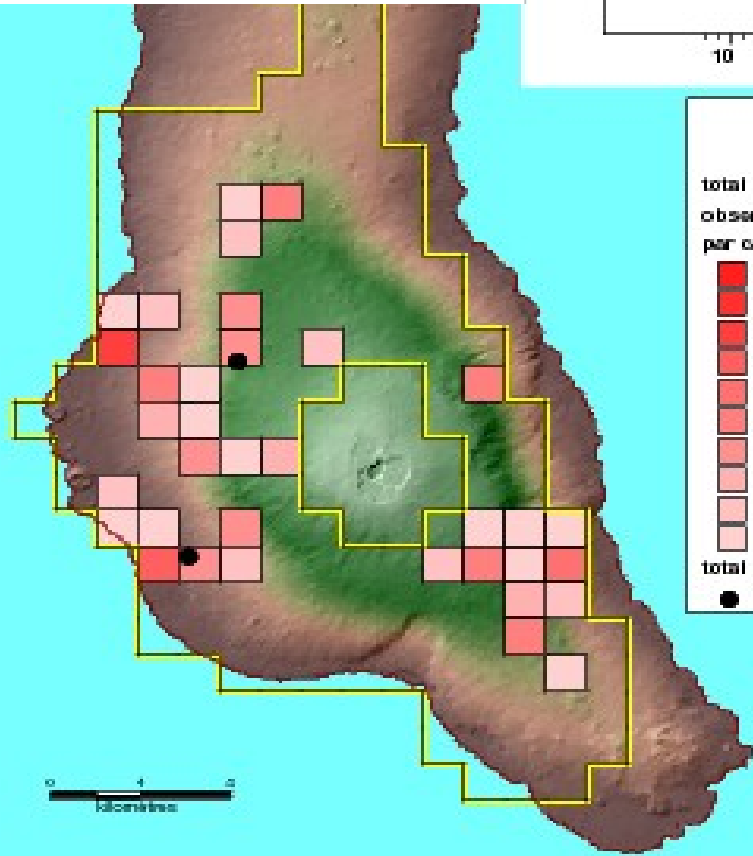
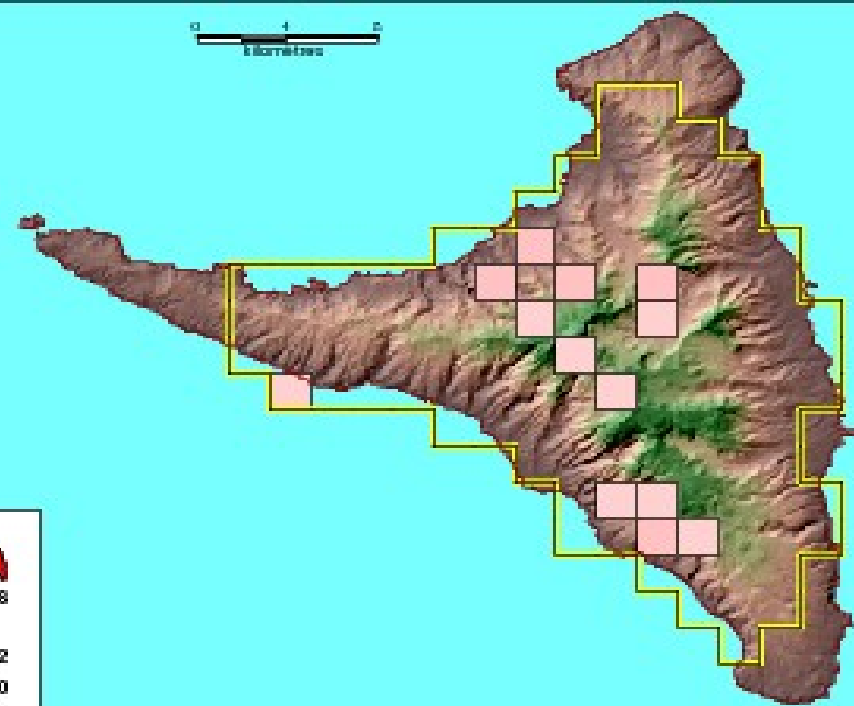
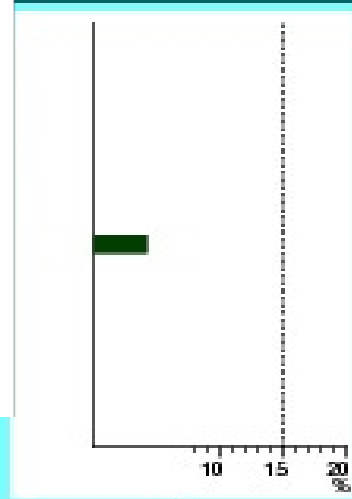
















total :	Σ			
total :	65	62	0	3
observations				
par carré max :				
50-	0			
25-49	0			
15-24	0			
10-14	1			
7-9	2			
5-6	1			
4	1			
3	1			
2	8			
1	12			
total carrés :	24			
●	nidification			



Coturnix coturnix : open spaces at high altitudes

Africa Africa



	Σ			
total :	138	120	0	18
observations				
per carré max :	17	0	2	
 50-	0	0	0	0
 25-49	0	0	0	0
 15-24				
 10-14				
 7-9				
 5-6				
 4				
 3				
 2				
 1				
total carrés				
 nid				



Accipiter francesiae : rain



the DeeGree link

RMCA has been using DeeGree since 2005

many GIS projects with web connection :

SYNTHESYS “Itineraries”

HerpNet (herpetology : amphibians & reptiles)

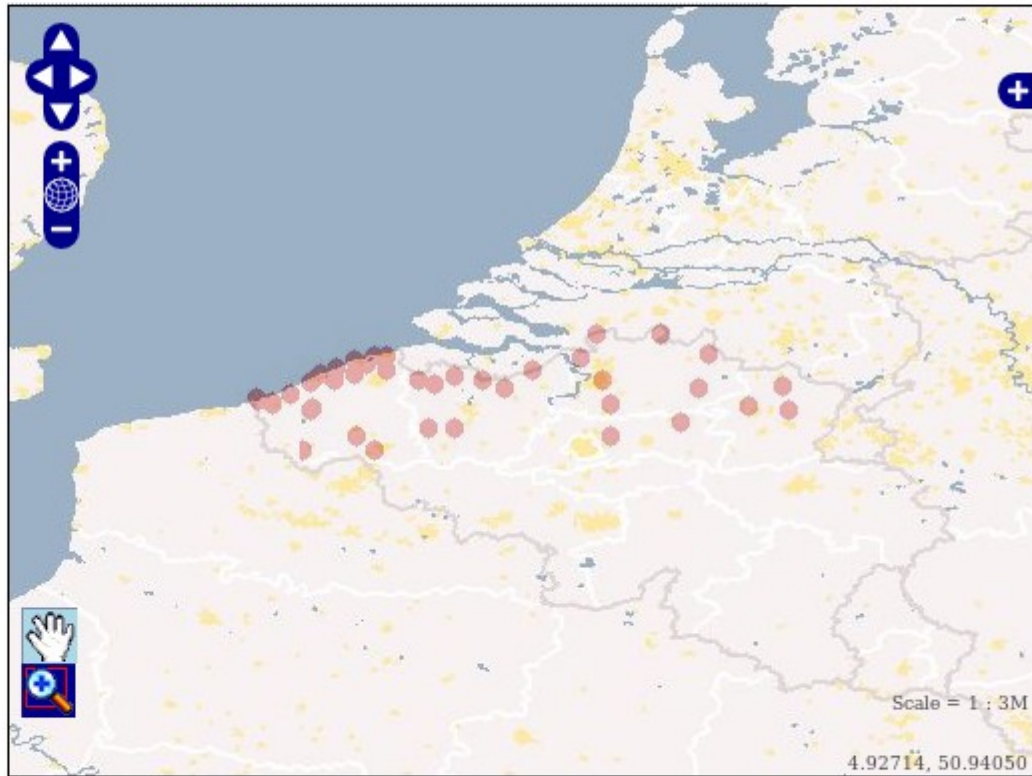
EDIT GeoPlatform webtool

after publication, Comoro data will be served to the
Web through a WMS



ItinTool results preview

- Home**
ItinTool home
- SYNTHESYS NA-D**
The EU synthesis of systematic resources
- EDIT WP5**
The European Distributed Institute of Taxonomy
- RMCA**
The Royal Museum for Central Africa



The following layers are plotted on this map :

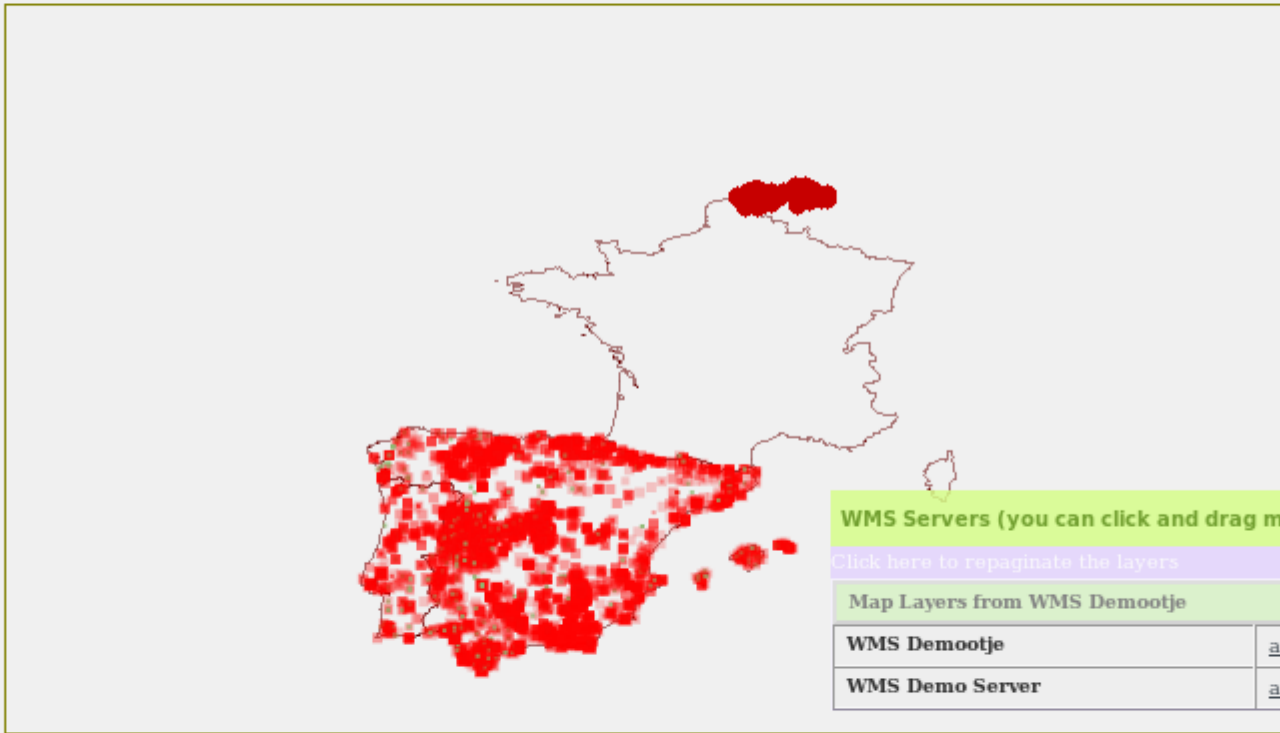
A base layer directly from the Matacarta WMS service:



Geoplatform MNCN



x: y:



- Context/Extent . . . (projection)
- Surface Units
- Environmental Variables
- Remote WMS

Enter a search parameter
Some ideas: NASA, FAO, Brasil, SPOT, flora...
 This tool searches in wms-sites.com
 Maybe they don't have what you are looking for...

EDIT WMS

load it
 Enter a WMS GetCapabilities URL:
<http://edit.csic.es/geoserver/wms?request=GetCapabilities>

load it

Remote WMS layers

WMS Servers (you can click and drag me)

Click here to repaginate the layers

Map Layers from WMS Demootje	
WMS Demootje	add to map
WMS Demo Server	add to map

2000 km You can change the scale... scale 1:

[Home](#)
[GIS layers description - Surface units & Environmental variables](#)

3D ?

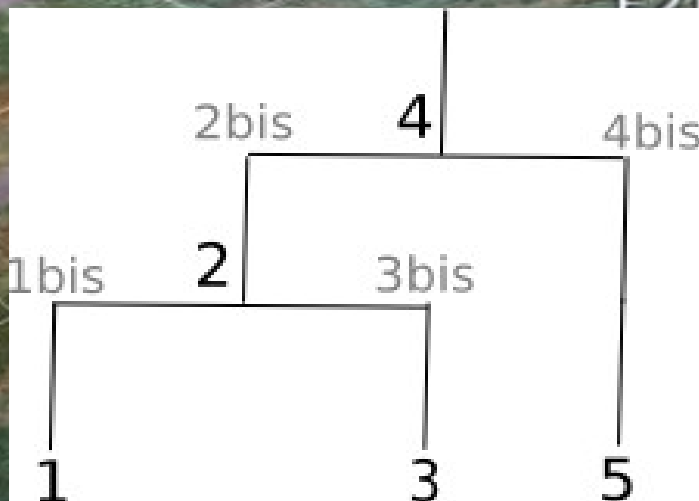
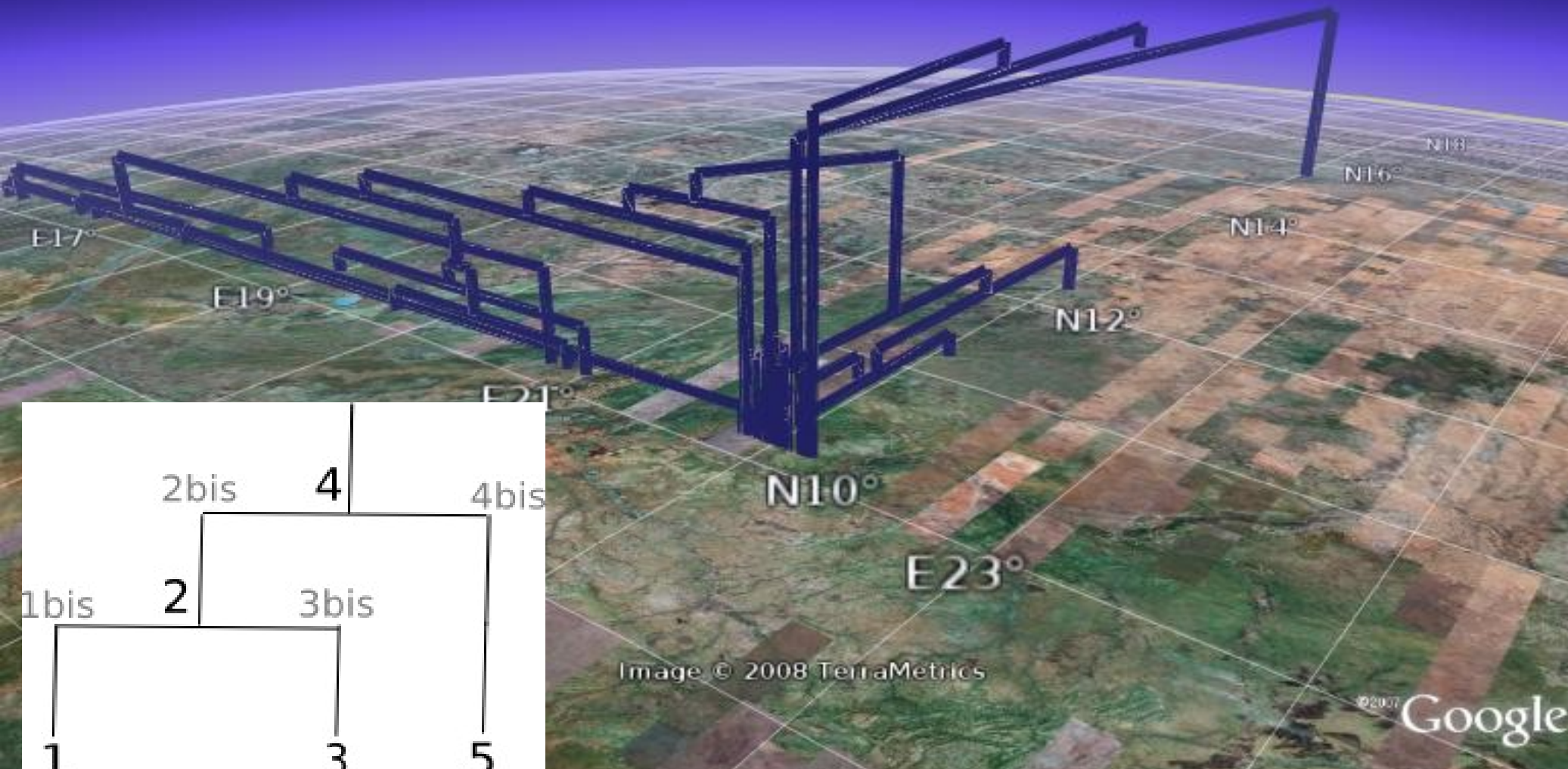


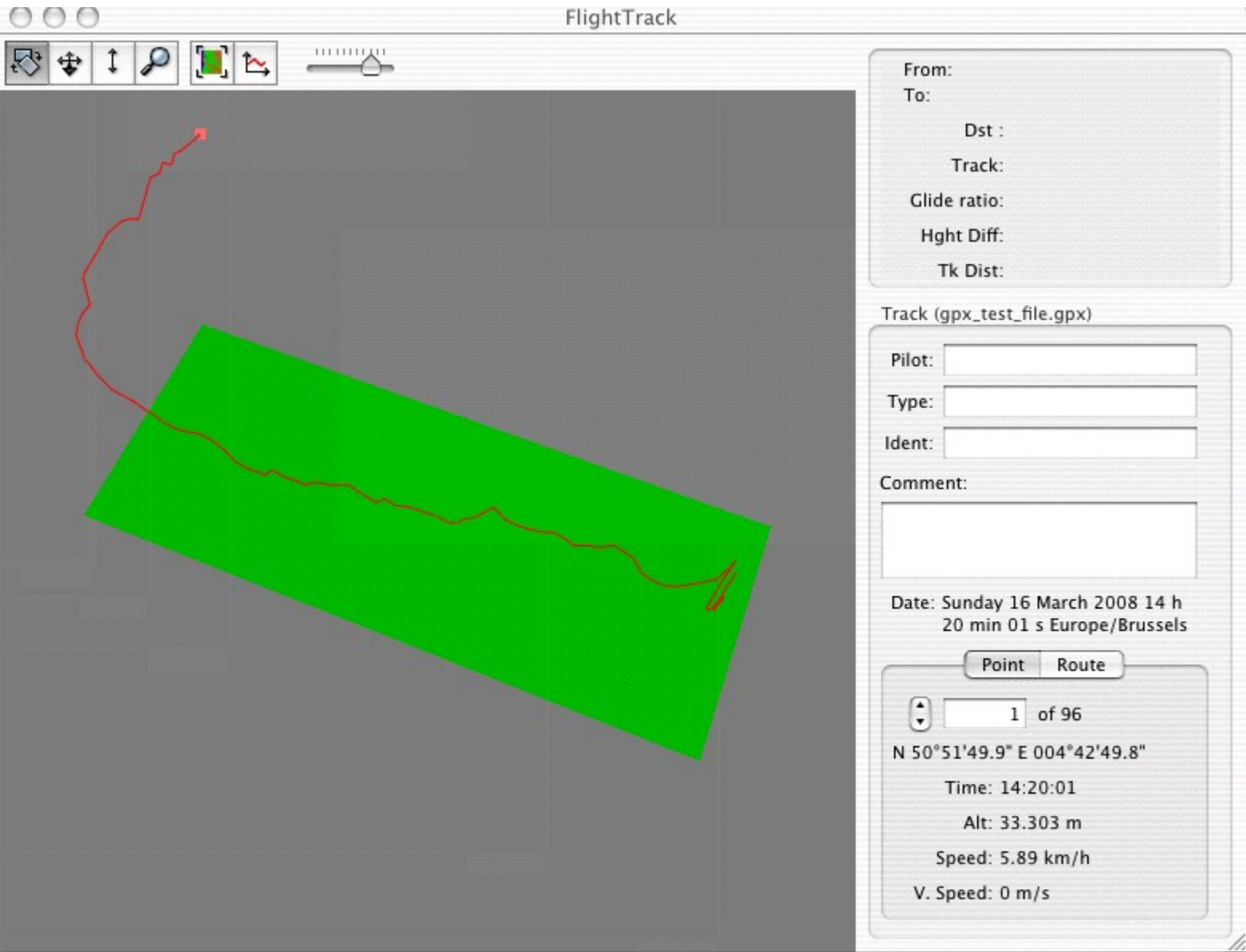
Image © 2008 TerraMetrics

©2007 Google

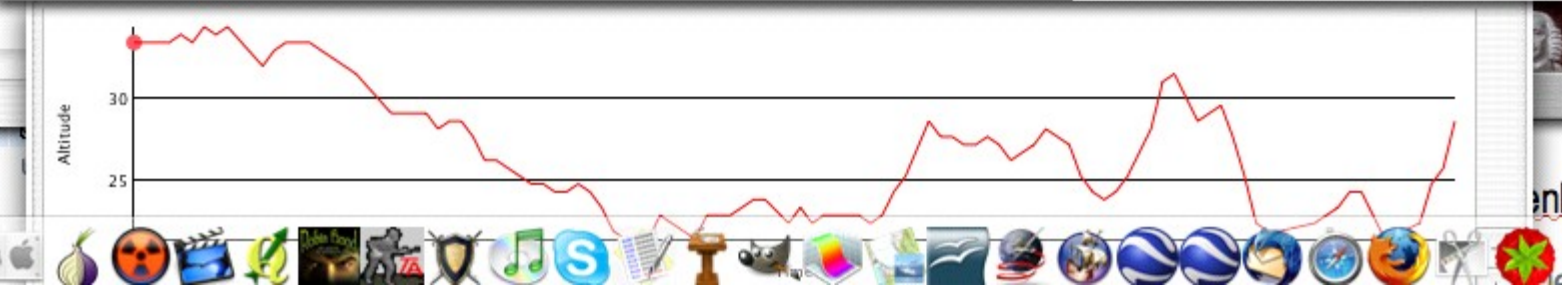
Pointer lat 12.610470° lon 20.138083°

Streaming  100%

Eye alt 294.12 k



3D ?





many technologies, one thing in common :
OGC standard compliance -> it all works together

PostgreSQL / PostGIS database

WMS/WFS : DeeGree / MapServer

visualisation : DeeGree iGeoPortal, Openlayers

GIS & editing : QuantumGIS, MapInfo, DeeJUMP,
GRASS, ...



Thanks...

Michel Louette, Danny Meirte, Patricia Mergen, Garin Cael,
Franck Theeten, Kim Jacobsen,...

EDIT & SYNTHESYS are EU projects