



universität**bonn**

Prof. Dr. Klaus Greve

Geographisches Institut

deegree day

2008

17.06.2008

deegree

**Opening Talk:**

**a few word on**

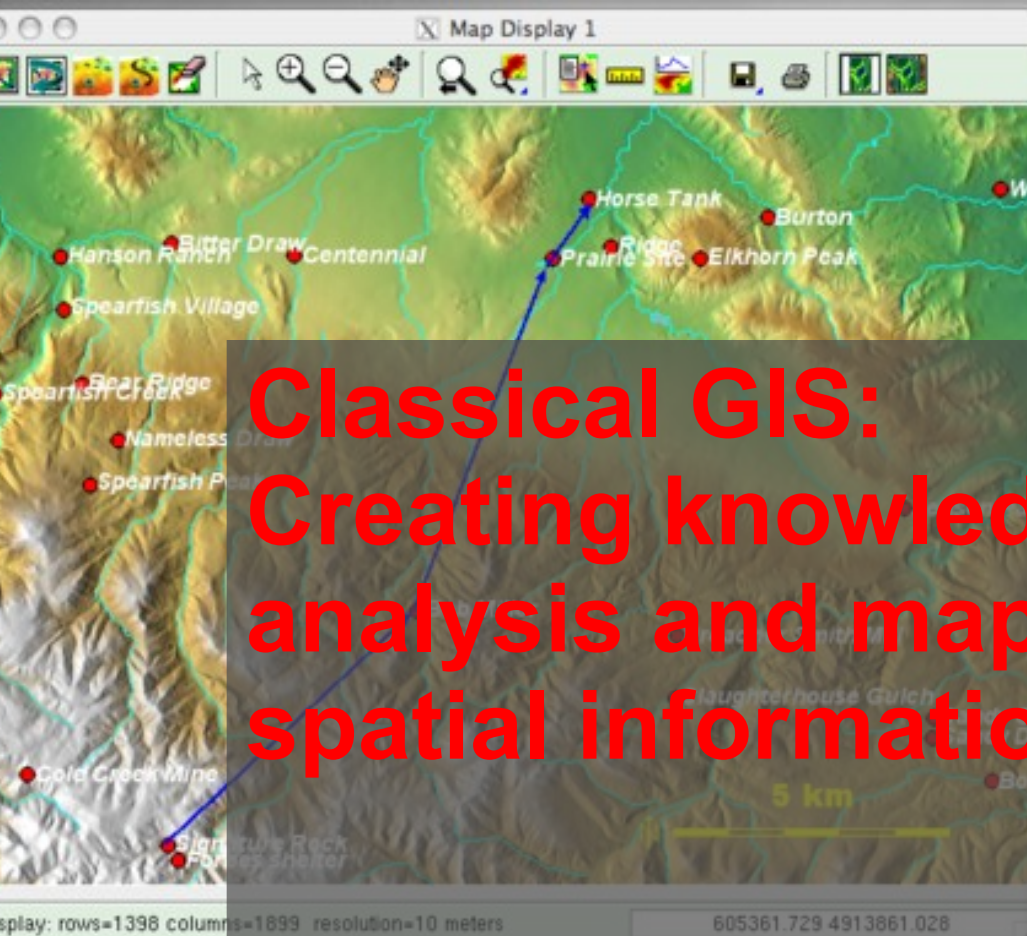
**GIS, SDI, OSM,**

**the Media**

**and**

**community approaches**





**Classical GIS:  
Creating knowledge through  
analysis and mapping of  
spatial information**



GRASS6.3.cvs GIS Manager - spearfish60\_test PERMANENT

File Config Raster Vector Imagery Volumes Databases Help Xtns

Map Layers for Display 1

Display raster maps

Base map: elevation10m\_shaded@PERMANENT

Optional color mapping. Use base map for shading, drape map for color in color relief map or data fusion

drape map: elevation.10m@PERMANENT

drape map brightness adjustment: 30

Output - GIS.m

Of the non-null cells:

n: 2654802

minimum: 1061.06

maximum: 1846.74

range: 785.679

mean: 1348.37

mean of absolute values: 1348.37

standard deviation: 175.494

variance: 30798.3

variation coefficient: 13.0153 %

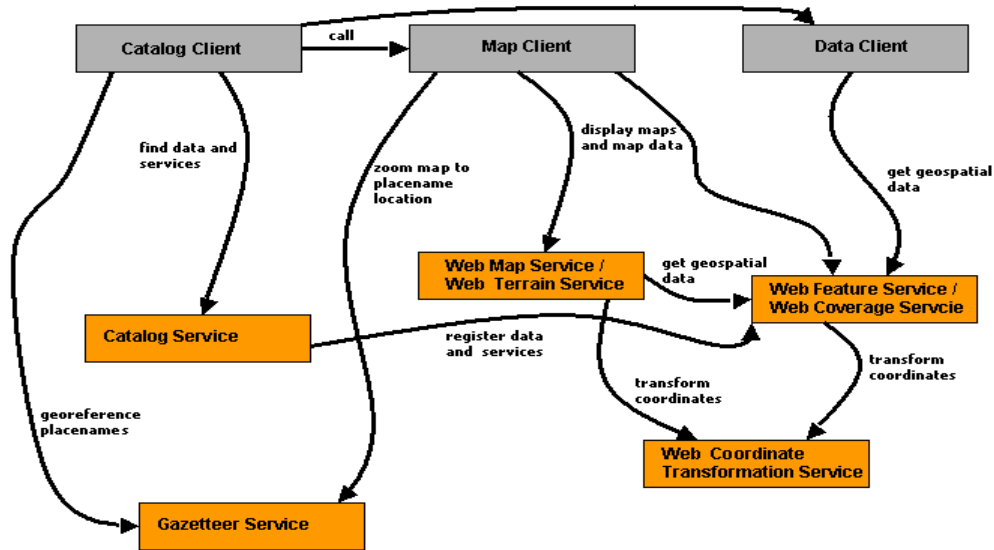
sum: 3579659211.6848597527

Save Clear

r.univar map=elevation.10m

Run (background) Run (GUI) Run (in Xterm)

# Spatial Data Infrastructure:



# Creating knowledge and assisting policy-making through sharing of spatial information

# **Spatial Data Infrastructure:**

# **Creating knowledge and assisting policy-making through sharing of spatial information**



“Essentially,

**Neogeography** is about people using and creating their own maps, on their own terms and by combining elements of an existing toolset.

Neogeography is about sharing location information with friends and visitors, helping shape context, and conveying understanding through knowledge of place.”

Search

Places Add Content

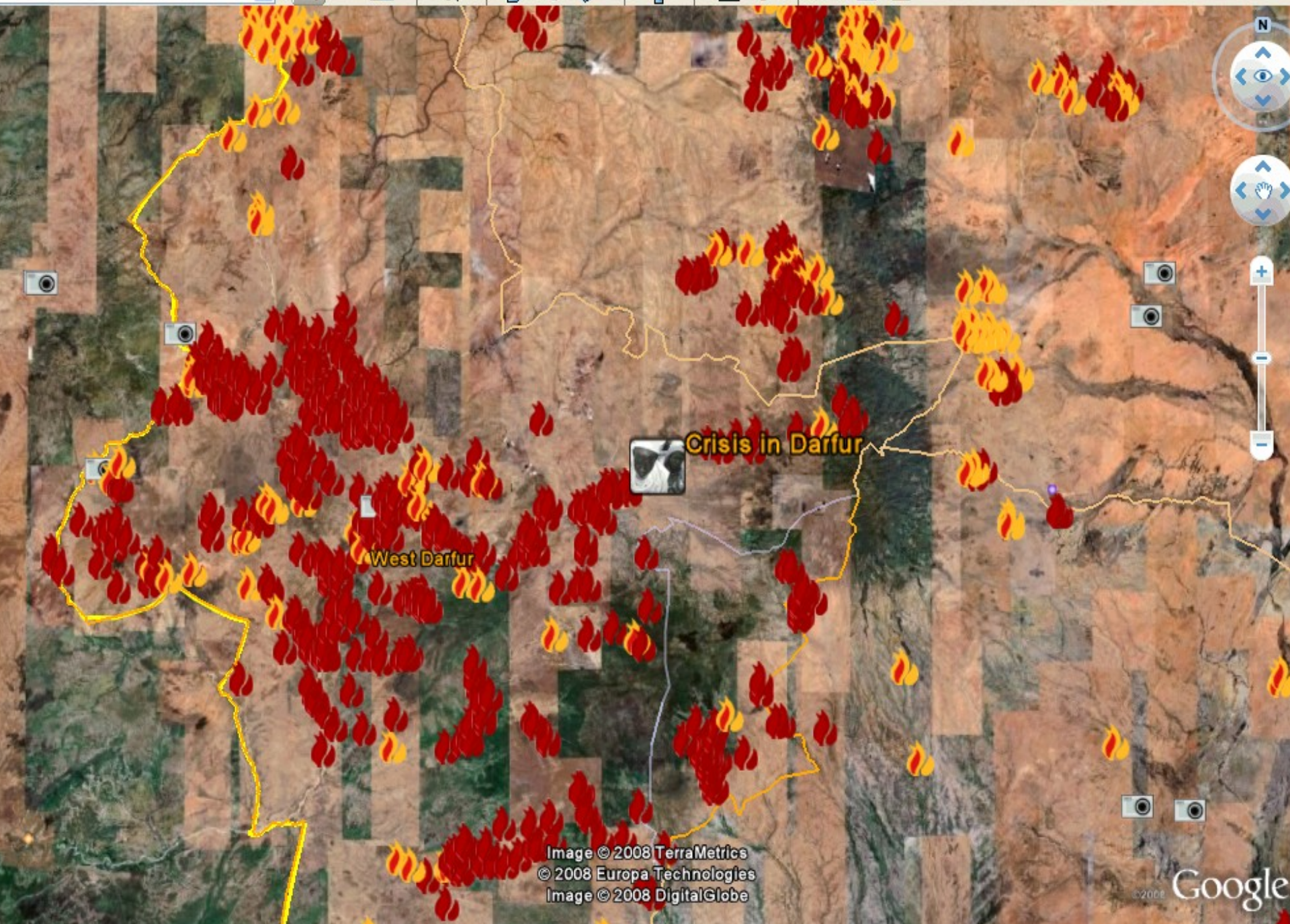
- North-Korea-Uncovered
  - Agriculture/Horticulture
  - Banking/finance
  - Communication
  - Cultural
  - Education
  - Energy
  - Government offices
  - Gulags
  - Hospitals
  - Hotels
  - Manufacturing / production
  - Military
  - Mining
  - Tombs
    - Historical
    - Leisure
    - Museums
    - National Parks
    - Propaganda
    - Religion
    - Shops/Markets
    - Sports
    - Theaters
    - Tombs and burial mounds
    - Other
  - Dams
  - Education
  - Elite Areas
  - Energy
  - Government offices
  - Gulags
  - Hospitals
  - Hotels
  - Manufacturing / production
  - Military
  - Mining

Layers



# Curtis Melvin: North Korean Economy Watch

<http://www.nkeconwatch.com/nk-uploads/ge-micro-pic.JPG>



Crisis in Darfur

West Darfur



## OpenStreetMap



The Free Wiki World Map

OpenStreetMap is a free editable map of the whole world. It is made by people like you.

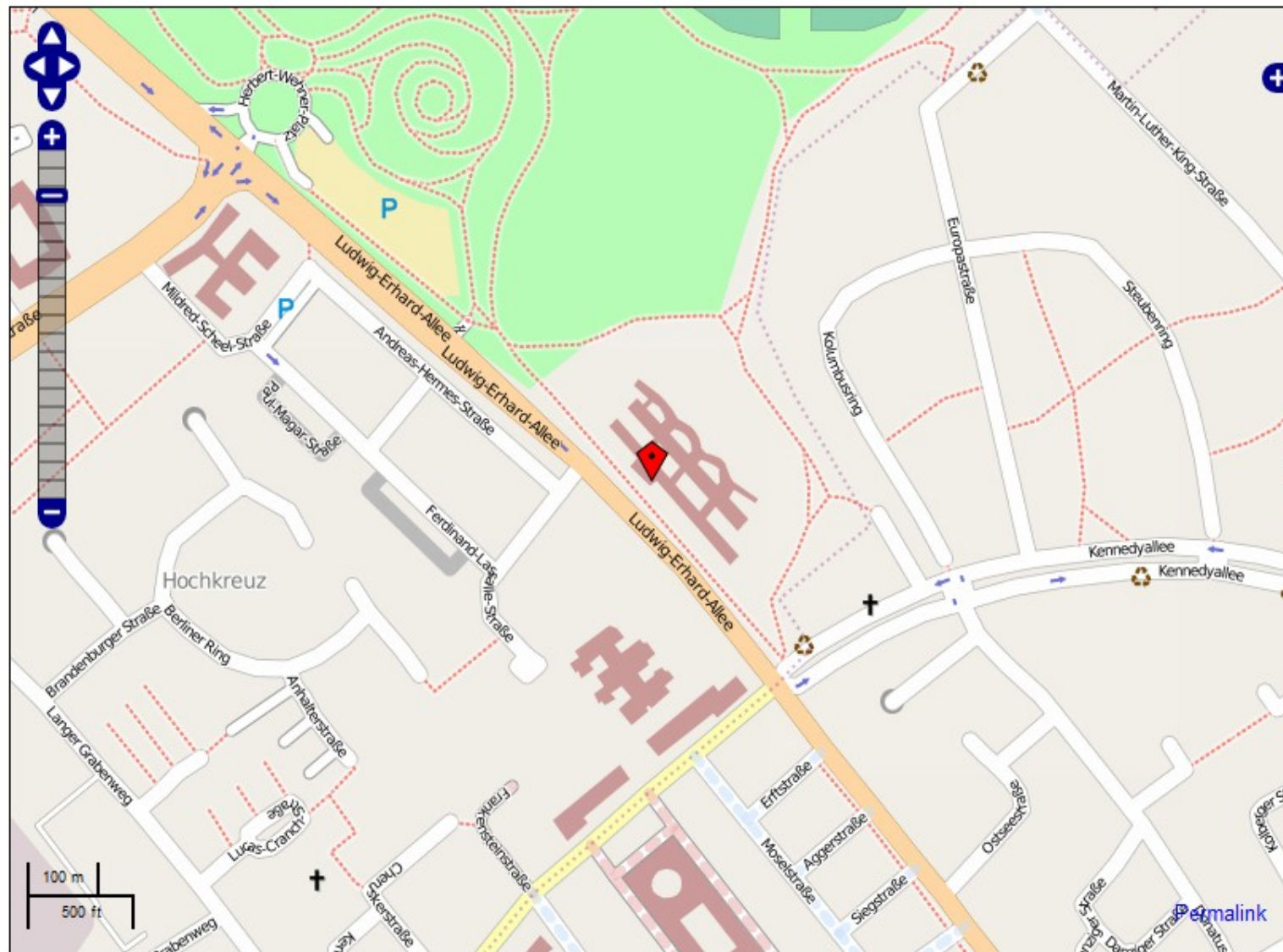
OpenStreetMap allows you to view, edit and use geographical data in a collaborative way from anywhere on Earth.

OpenStreetMap's hosting is kindly supported by the [UCL VR Centre](#) and [bytemark](#).

**Help & Wiki**  
**News blog**  
**Shop**  
**Map key**

**SotM** July 10-12  
 in Amsterdam

Come to the 2009  
**OpenStreetMap** Conference,  
 The State of the Map

[View](#) [Edit](#) [History](#) [Export](#) [GPS Traces](#) [User Diaries](#)
[log in](#) | [sign up](#)


deegree day presentations			
Time	Plenary Track I	Plenary Track II	Tutorial
10:00 - 10:15	Opening Talk		
10:15 - 11:15	<b>Raumplanung</b> <i>Burdorf, Markus: Interaktive Karten und Profile zur Laufenden Kartographie (German) (abstract)</i>  <i>Meyer, Katrin: Gender-Index - eine Landkarte der Gleichstellung für Deutschland (German) (abstract)</i>	<b>Innovative Ansätze</b> <i>Krumpe, Jans: Multiattributive Raumbewertung von verteilten Geoinformationen (German) (abstract)</i>  <i>von Dömming, Andreas: Entwicklung eines Registry-Prototyps für die Geodateninfrastruktur und GeoInfoDok-basierte Anwendungen (German) (abstract)</i>	<b>Introduction to deegree (English)</b>
11:15 - 11:45	Coffee Break		
11:45 - 12:45	<b>Geo-Productiv</b> <i>Holl, Stephan: Zuverlässiges Deployment von deegree-Komponenten am Beispiel von GISpatcher (German) (abstract)</i>  <i>Bimüller, Erwin: XPlanung und WebGIS mit deegree im Landkreis Elbe-Elster (German) (abstract)</i>	<b>Thematical Projects</b> <i>Knibbe, Frans: deegree in EuroGeoNames (English) (abstract)</i>  <i>Kurvers, Wilbert: Results X-border-GDI NL-NRW program (English) (abstract)</i>	
12:45 - 13:45	Lunch Break		
13:45 - 14:15	Project Steering Committee (PSC)		

# Interactive maps for continuous spatial monitoring

# Gender Index - Interactive maps on equal opportunities



**deegree day**  
**2009**

**27.05.2009**

# **Prof. Dr. Klaus Greve**

**Geographisches Institut  
der Universität Bonn**

**7°05'27"E 50°43'34"N**

**Postfach 11 47  
D-53001 Bonn**

**Tel: 0228 73 -5596 / -2098 Fax -9658**

**Email: [klaus.greve@uni-bonn.de](mailto:klaus.greve@uni-bonn.de)  
<http://www.giub.uni-bonn.de/greve>**

