



# Crossborder Geodata Infrastructure D-NL

May 2009

Wilbert Kurvers MSc.

Provincie Limburg

[WWW.X-BORDER-GDI.ORG](http://WWW.X-BORDER-GDI.ORG)



## Index

- X-Border-GDI
  - Why X-GDI
  - Standards
  - Open Source software
- X-GDI components: (deegree)
  - MIS
  - Viewer
  - Thesaurus
  - Config tools
  - Portals

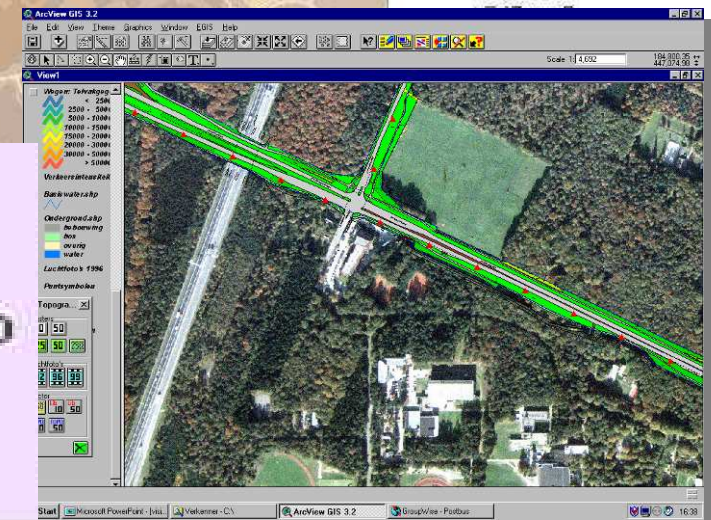


# Why a X-border-Geo Data Infrastructure?

- Spatial Planning
- Economic Development (Industrial Parks)
- Agro Business
- Tourism
- Mobility and Transport
- Risk Management
- Water Management (Flood)
- Environment



- Effectafstand gewond
  - Explosief
  - Ontvlambaar
  - Toxisch
- Evacuatie afstand kernenergie
- Veiligheidsafstand
  - Professioneel vuurwerk
  - Consumentenvuurwerk
- Zone 1 vliegveld
- Zone defensie
- Zone A





## GDI Standards

- Technical:
  - Metadata profile (data / services)
  - WMS profile
  - WMS-SLD profile
  - WFS-T profile
  - Security
- Data:
  - Data models
  - Semantics





## Tender conditions lead to Open Source

- Conform specs and open standards (profiles)
- Transferable 'results' to other X-GDI projects/participants ('without' Costs)
- Platform independant – Windows/Unix
- Component based and scalable
- Support by more then one NL/DU party



# basic infrastructure components

## Metadata Information System

Planen und Bauen  Planen en Bouwen

Gruppierungsliste | Serviceliste | Redakteure-Erfasser | Verwaltung | Hilfe

generelle Informationen\* | Raum / Zeit | Datenqualität | Angaben zu Nutzung | Kataloge

Metadaten\* | Basisinformation zur Ressource\* | Basisinformation zum Datenbestand\* | Schlüsselwörter

**Ausgewähltes Dokument**  
Grenzüberschr. Katastr.- u. Krisen-Mgmnt

**Metadaten**

Sprache*	zur Dokumentation der Metadaten verwendete Sprache
Zeichensatz*	UTF-8
Kontakt*	- Claudia Fuchs - Kontaktperson CEGI - - Anwender / Nutzer der Daten CEGI - Dagmar Lanfermann - Kontaktperson GKSC - X Border GDI - Kontaktperson
Datum*	2008-01-03 [yyyy-mm-dd]
Bezeichnung des Metadatenstandards*	ISO 19115: 2003 (X-GDI)
Version des Metadatenstandards*	1.1
Bezugssystem*	EPSG:25832 EPSG EPSG:28992 EPSG EPSG:3044 EPSG EPSG:31466 EPSG EPSG:31467 EPSG
Rechtliche Einschränkungen (Metadaten)	Nutzung: Bevorstehende Patentierung; Zugriff: andere Zugriffs- oder Nutzungse Nutzung: von allgemeiner Offenlegung und Verbreitung ausgeschlossen; Zugrif Nutzung: von allgemeiner Offenlegung und Verbreitung ausgeschlossen; Zugrif
	nicht klassifiziert; nur für Tests vertraulich:

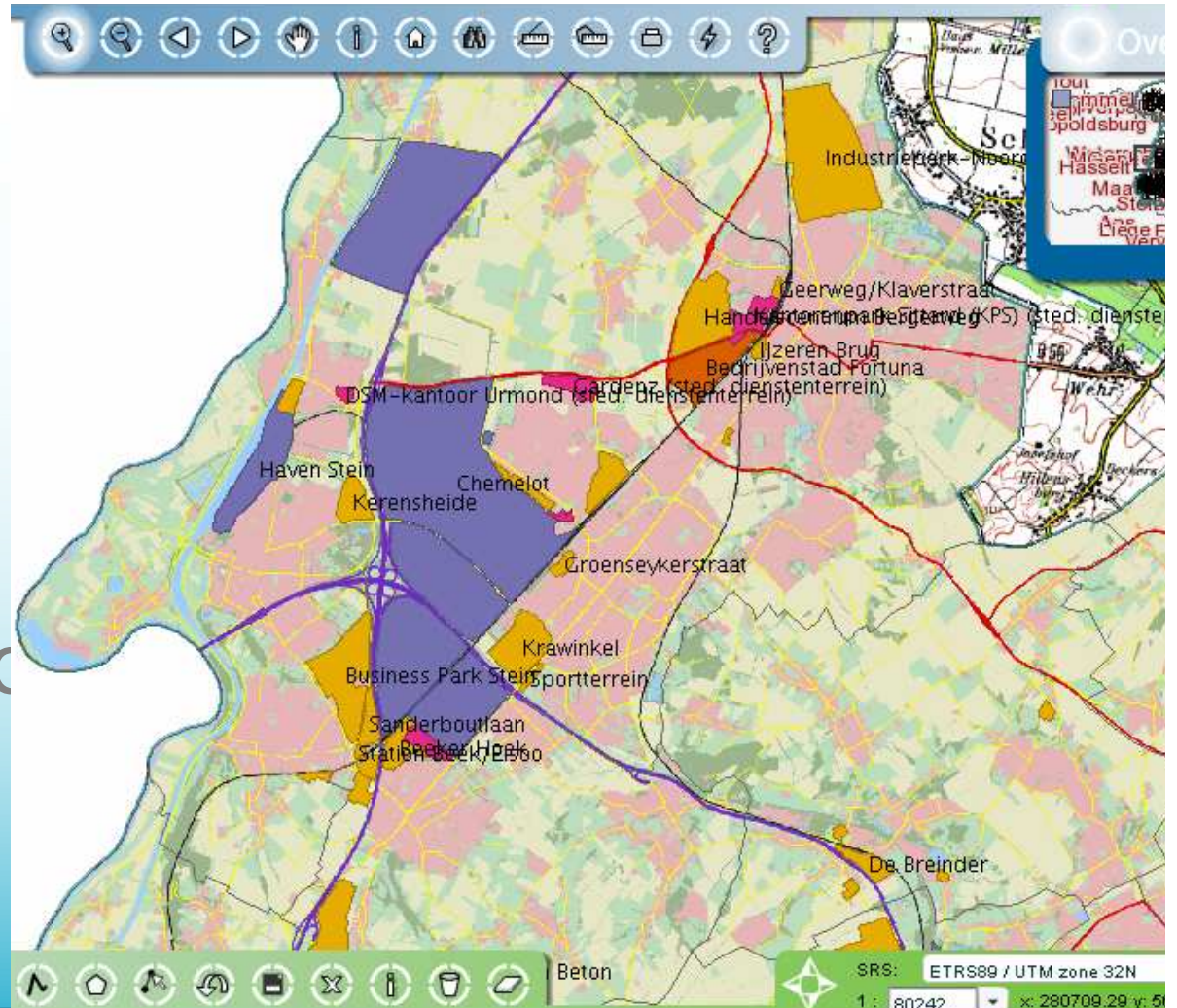
- MIS (demo)
- Viewer
- Thesaurus
- Configuration tool
- Portals



# basic infrastructure components

## Geoïde

- MIS
- Viewer (demo)
- Thesaurus
- Configuration tool
- Portals





# basic infrastructure components

- MIS
- Viewer
- Thesaurus
- Configuration tool
- Portals

Thesauri Management Applikation

Aktualisieren

Thematische Auflistung | Thematische Auflistung | Hierarchische Liste | < Konzept 'Flächennutzungsplan' >

Suche  Suche ALL

Label	Definition
	observations.
Abbau von natürlichen Ressourcen	The result of the cumulative activities of farmers, households, and industries, all trying to improve their social reasons. People may not completely understand the long-term consequences of their activities on the nature with the global ecosystem are: a) fossil fuel burning which may double the atmospheric carbon dioxide concentration; b) expanding agriculture and forestry and the associated circulation of these nutrients; c) increased exploitation of the freshwater system both for irrigation in agriculture.
Abbaubarkeit	The capacity of being decomposed chemically or biologically.
Abbauprodukt	Those chemicals resulting from partial decomposition or chemical breakdown of substances.
Abbruchmüll	Masonry or rubble wastes arising from the demolition of buildings or other civil engineering structures.
Abbruchunternehmen	The activity of reducing buildings or other structures to rubble.
Abdeckung	No definition needed.
Abdichtung	Luting, making watertight, waterproofing.
Abfackelung	1) Flares use open flames during normal and/or emergency operations to combust hazardous gaseous. They however, supplemental fuel may be required to sustain the combustion. Historically, flares have been used in plants having anaerobic digesters. Regulation for thermal destruction of hazardous wastes limit the practice from digesters or landfill gas collection systems. 2) A control device that burns hazardous materials to prevent usually on top a stack.
Abfall	Material, often unusable, left over from any manufacturing, industrial, agricultural or other human process; useless.
Abfallabgabe	Imposed fee, expense, or cost for the management of refuse or unwanted materials left over from a manufacturing process.
Abfallablagerung	The discarding of waste in any manner, often without regard to environmental control.
Abfallablagerung	Area where wastes are deposited and burned.
Abfallagerung	Temporary holding of waste pending treatment or disposal. Storage methods include containers, tanks, was
Abfallart	A grouping by type of unusable material left over from any process.
Abfallassimilationsfähigkeit	
Abfallaufkommen	The total amount of refuse or unusable material that enters a process or system.

Seite 1 von 261

(c) 2008 - X-border-GDI



# basic infrastructure components

- MIS
- Viewer
- Thesaurus
- Configuratie tools
- Portalen

Taal: NL | DE | EN

Coloron | Contact | Help | Begripsverklaring

Helderheid 0% 25% 50% 75%

schaal 1 : 94.328

- Overzichtsk kaart ?
- Wegennet ?
- Verkeersinformatie ?
- Verkeersgegevens ?

NL+D  NL  D

aandeel in etmaalgemiddeld ?

vrachtverkeer ?

dagsoort ?

periode ?

Jaar: 2005

Gevaarlijke stoffenroute ?

Kies gebieden ....

Gemeente (Limburg)

euregio

**Begripsverklaring**

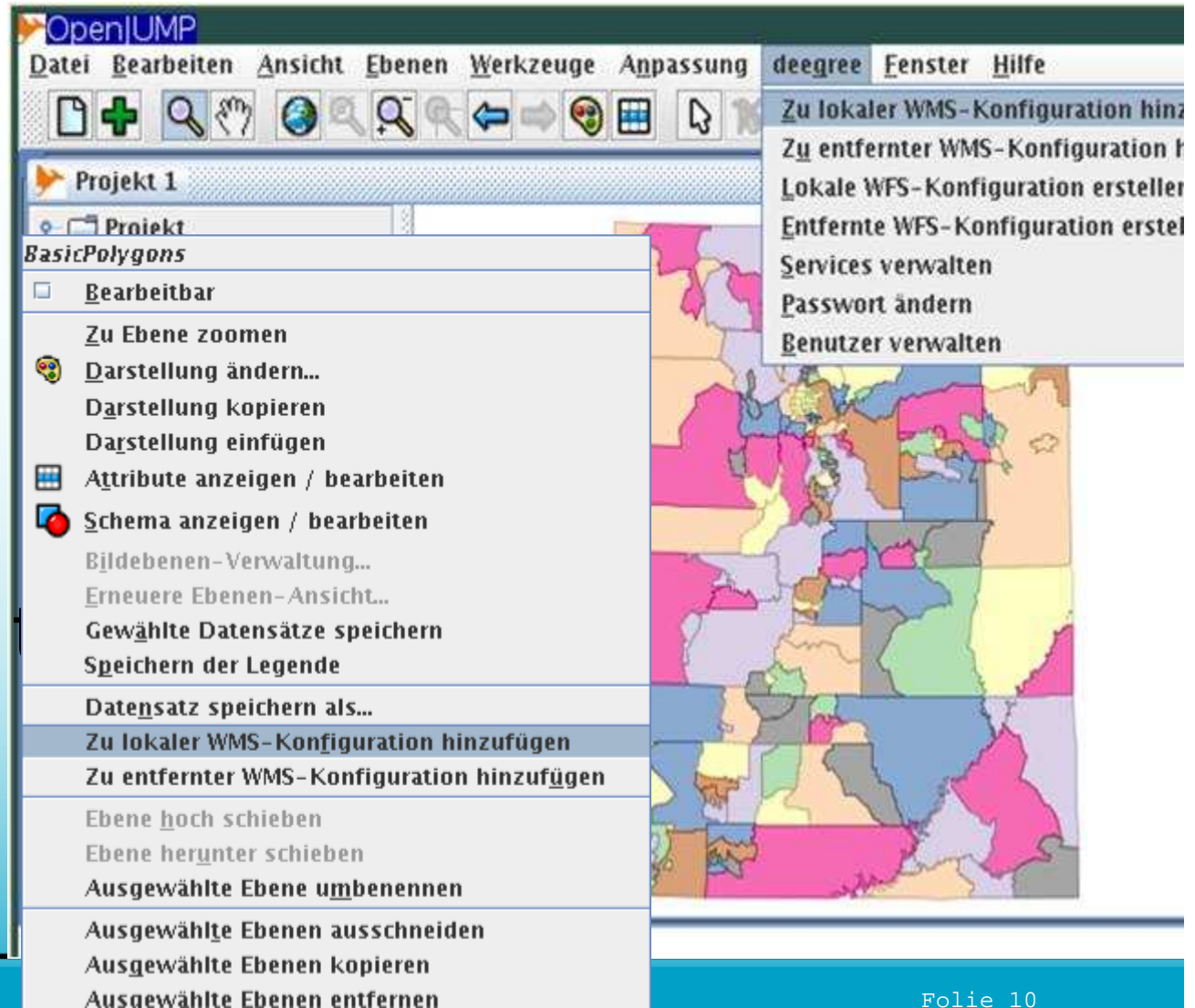
**Vrachtverkeer**

Alle voertuigen die voor het transport van goederen gebruikt worden.



# basic infrastructure components Webservices

- MIS
- Viewer
- Thesaurus
- Configuration
- Portals

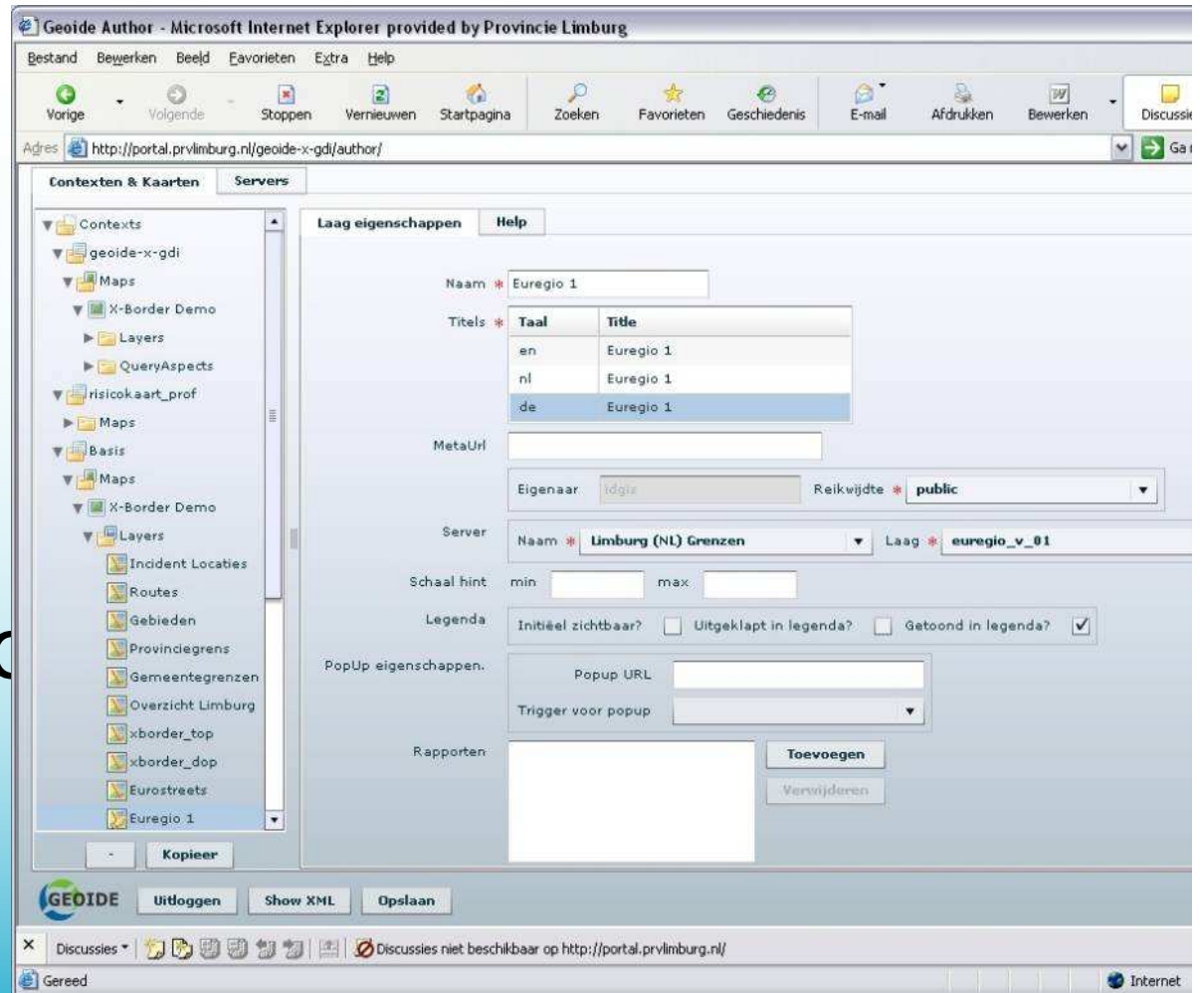




# basic infrastructure components

## Geoïde Viewer Author

- MIS
- Viewer
- Thesaurus
- Configuration tool (demo)
- Portals





# basic infrastructure components

## Industrial Parks

- MIS
- Viewer
- Thesaurus
- Configuration tool
- Portals

GI-X Gewerbeflächenportal

**SUCHEN**

Kreis/kreisfreie Stadt:  
Kreis Viersen

Stadt/Gemeinde:  
Brüggen

Gewerbegebiet:

Fläche (m2):  
von bis  
 Inkl. Gewerbeobjekt

Verkehrsanbindung:  
zum Flughafen km  
zur Autobahn km

Verfügbarkeit:  
 sofort  in 1-2 Jahren

**THESAURUS**

Username: Passwort:  
LOGIN

**Wickrathberg**

**Geerdshof**

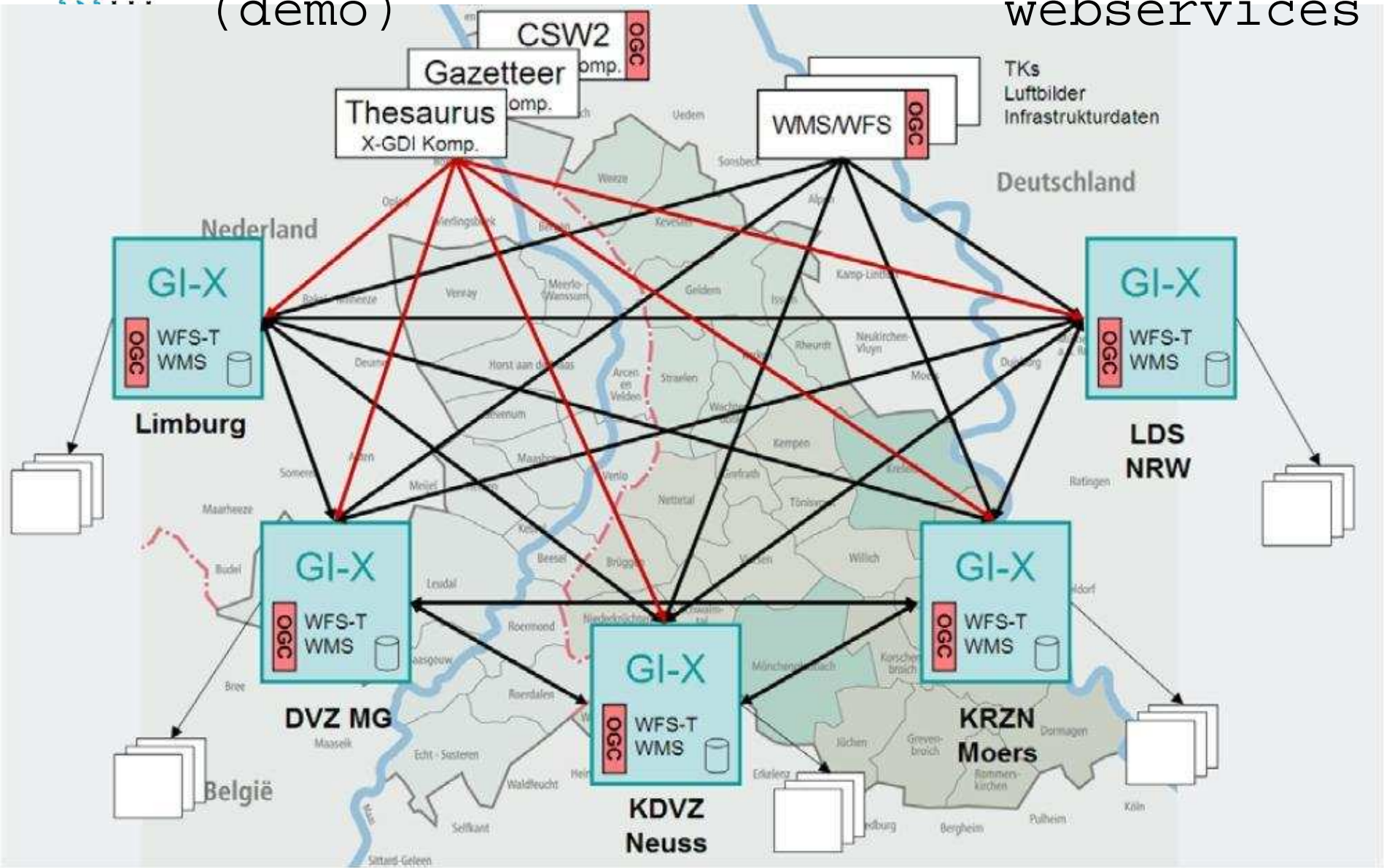
Kartenbild

DETAILS

BORDER-GIS WEBSITE IMPRESSUM KONTAKT



# Industrial Park Portal deegree webservices (demo)





# Questions?

[WWW.X-BORDER-GDI.ORG](http://WWW.X-BORDER-GDI.ORG)

**EUREGIO**



euregio

rhein-maas-nord rijn-maas-noord



**EUREGIO**

Het project werd gesubsidieerd door de Europese Unie in het kader van het Communautaire Initiatief INTERREG-IIIa met middelen van het Europees Structuurfonds voor Regionale Ontwikkeling alsmede van de Ministeries van Economische Zaken van Nederland en de Duitse deelstaat Nordrhein-Westfalen.



Das Projekt wurde finanziell unterstützt durch die Europäische Union im Rahmen der Gemeinschaftsinitiative INTERREG-IIIa aus Mitteln des Europäischen Strukturfonds für regionale Entwicklung sowie durch die Wirtschaftsministerien der Niederlande und des Bundeslandes Nordrhein-Westfalen.

**EUREGIO**