

deegree day 2010

CampusGIS-3D

Setup of a deegree3 WPVS

Christian Willmes
Geographisches Institut
Universität zu Köln

c.willmes@uni-koeln.de

Outline

- Introducing CampusGIS-3D Project
- Data
- Software
- 3D Model conversion toolchain
- deegree3 WPVS setup
- Future developments

The CampusGIS-3D Project

The CampusGIS-3D Project

- CampusGIS is an SDI / WebGIS research project.

The CampusGIS-3D Project

- CampusGIS is an SDI / WebGIS research project.
- CampusGIS-3D evolved out of diploma thesis as a proof of concept implementation (Willmes 2009).

The CampusGIS-3D Project

- CampusGIS is an SDI / WebGIS research project.
- CampusGIS-3D evolved out of diploma thesis as a proof of concept implementation (Willmes 2009).
- The POC was a deegree 2.3 WPVS setup.

Data

Data

- Digital Elevation Model
 - 5m DEM of Cologne area

Data

- Digital Elevation Model
 - 5m DEM of Cologne area
- DEM Texture Layer
 - Aerial Image (Ortophoto) in 0.3m/Pixel ground res.
 - OSM Overlay

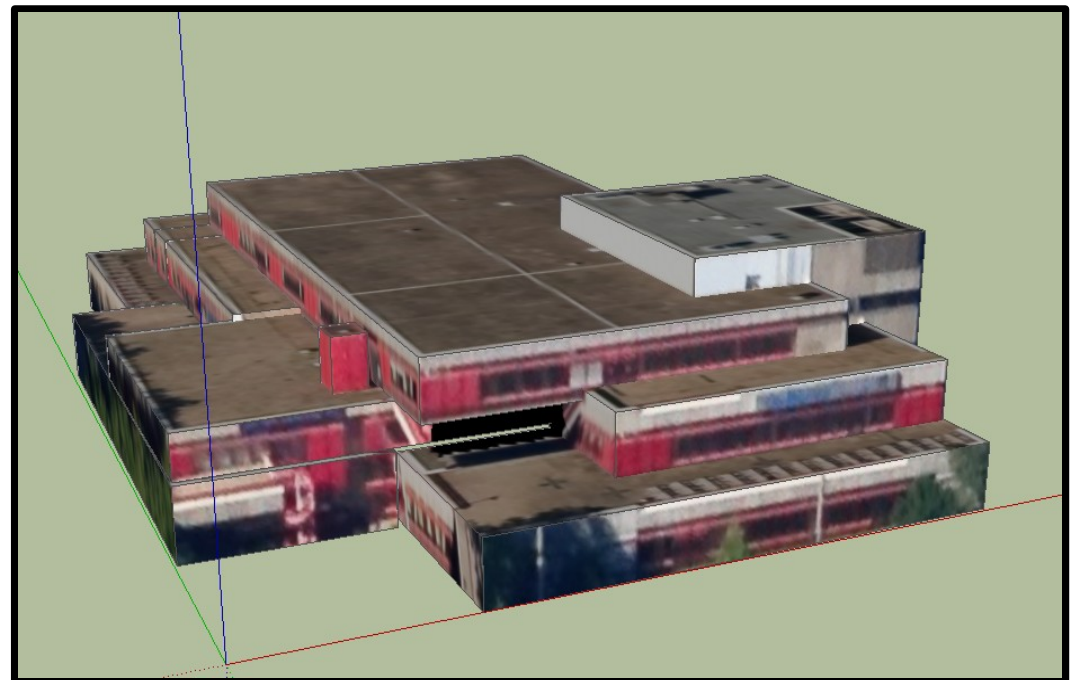
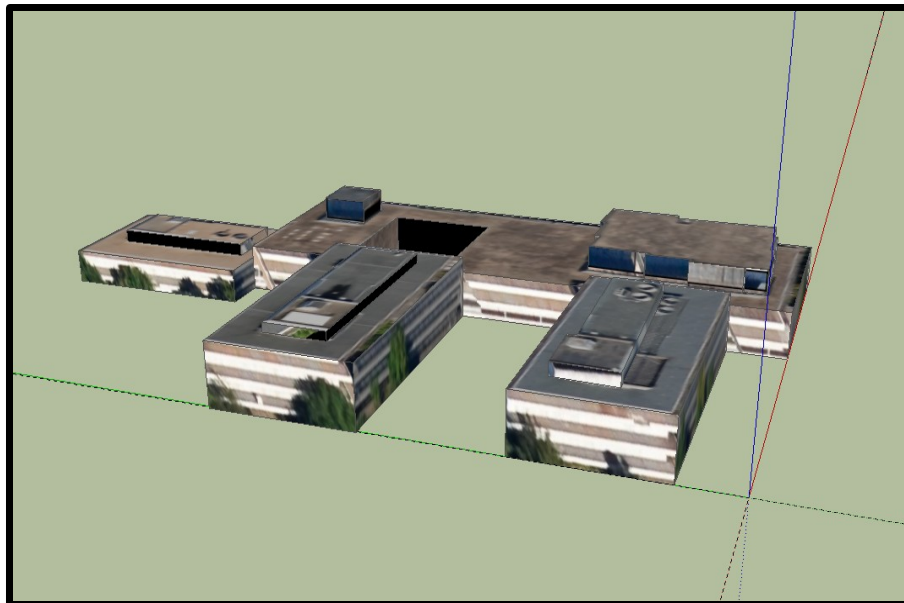
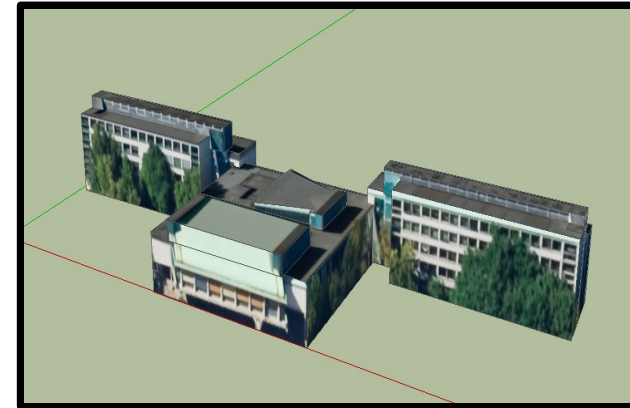
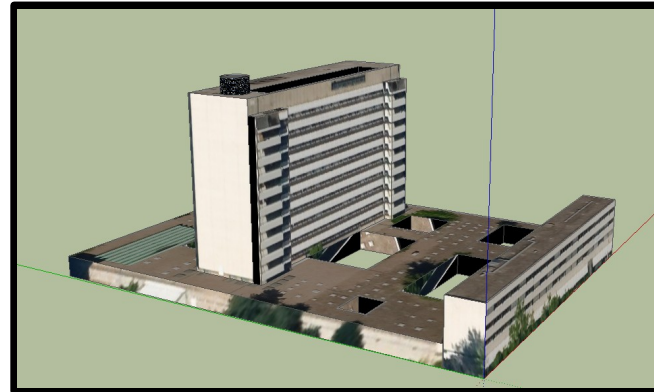
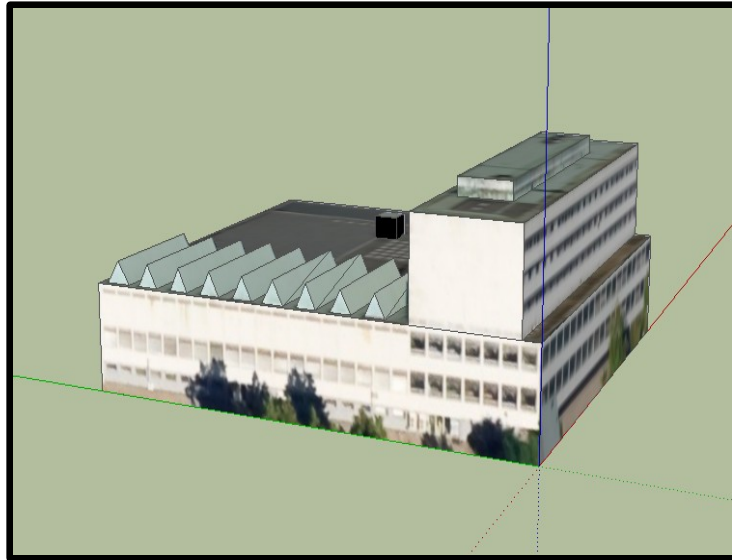
Data

- Digital Elevation Model
 - 5m DEM of Cologne area
- DEM Texture Layer
 - Aerial Image (Ortophoto) in 0.3m/Pixel ground res.
 - OSM Overlay
- 3D Building Model (CityGML)
 - LoD1
 - LoD2
 - LoD3

LoD1 Buildings



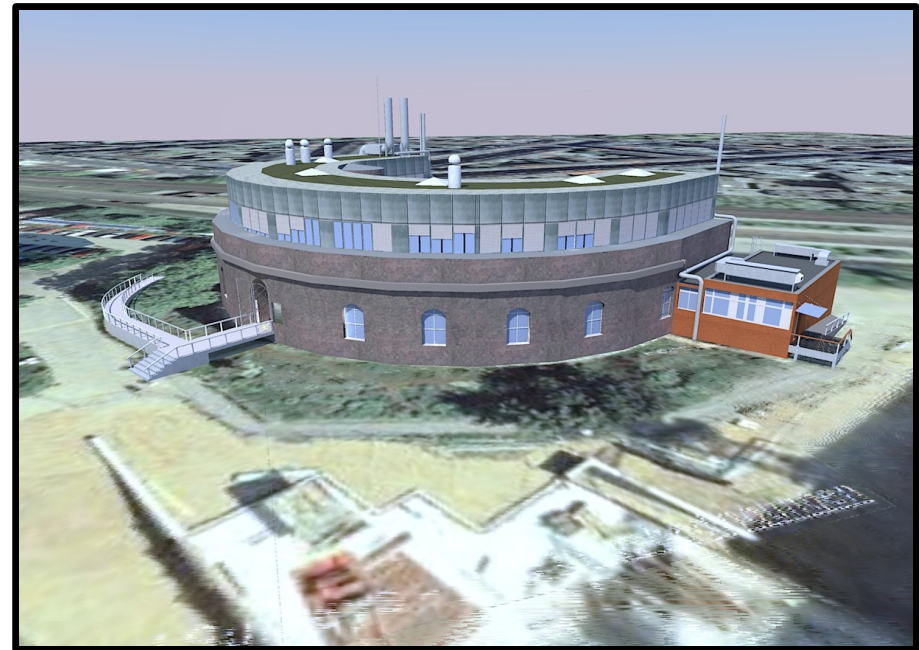
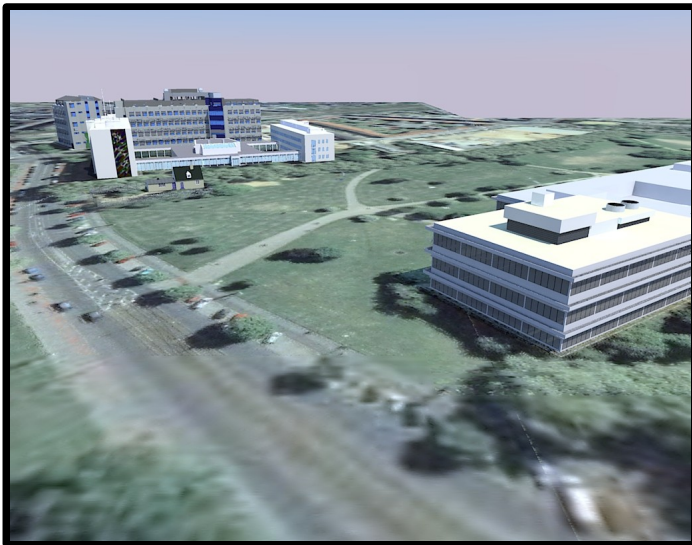
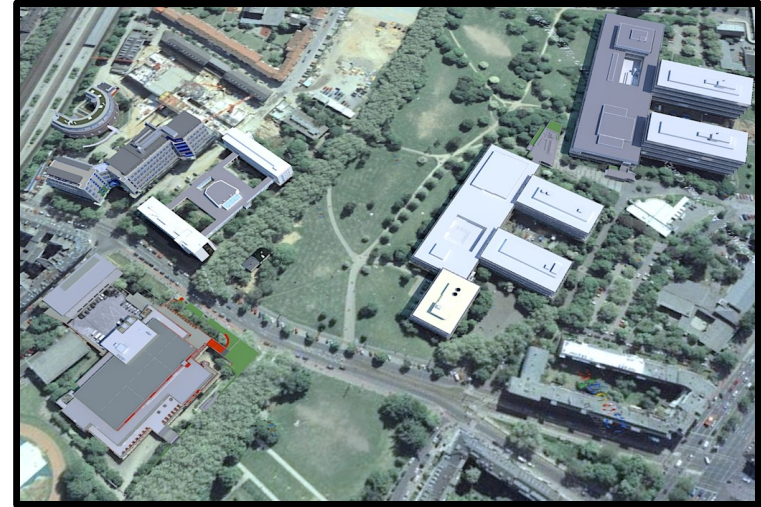
LoD2 Buildings



LoD2 Buildings



LoD3 Buildings



Rendered in Sketchup with
Kerkythea PlugIn.
<http://www.kerkythea.net/>

16.11.2010

Christian Willmes | c.willmes@uni-koeln.de

Software

Software

- Google Sketchup
 - citygml.de Sketchup-PlugIn

Software

- Google Sketchup
 - citygml.de Sketchup-PlugIn
- CityGMLConverter
 - citygml4j Java Library
 - deegree2 framework

Software

- Google Sketchup
 - citygml.de Sketchup-Plugin
- CityGMLConverter
 - citygml4j Java Library
 - deegree2 framework
- deegree3 framework
 - d3toolbox
 - d3 WPVS

Software

- Google Sketchup
 - citygml.de Sketchup-PlugIn
- CityGMLConverter
 - citygml4j Java Library
 - deegree2 framework
- deegree3 framework
 - d3toolbox
 - d3 WPVS
- jQuery

3D-Model conversion Toolchain

3D-Model conversion Toolchain



Sketchup

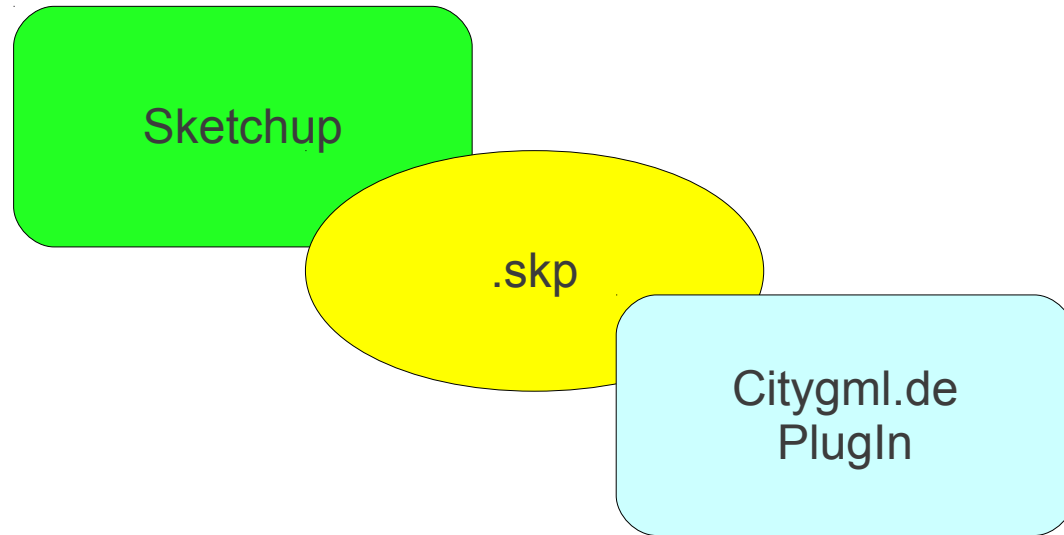
3D-Model conversion Toolchain



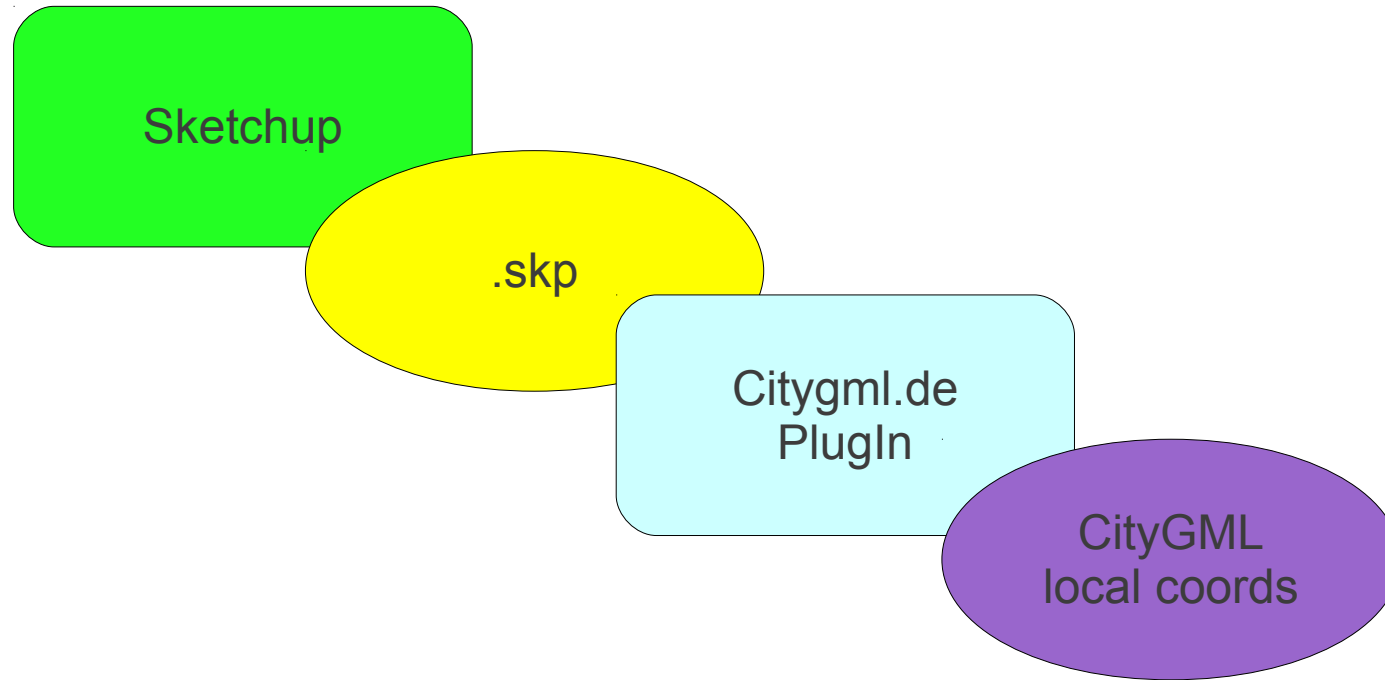
Sketchup

.skp

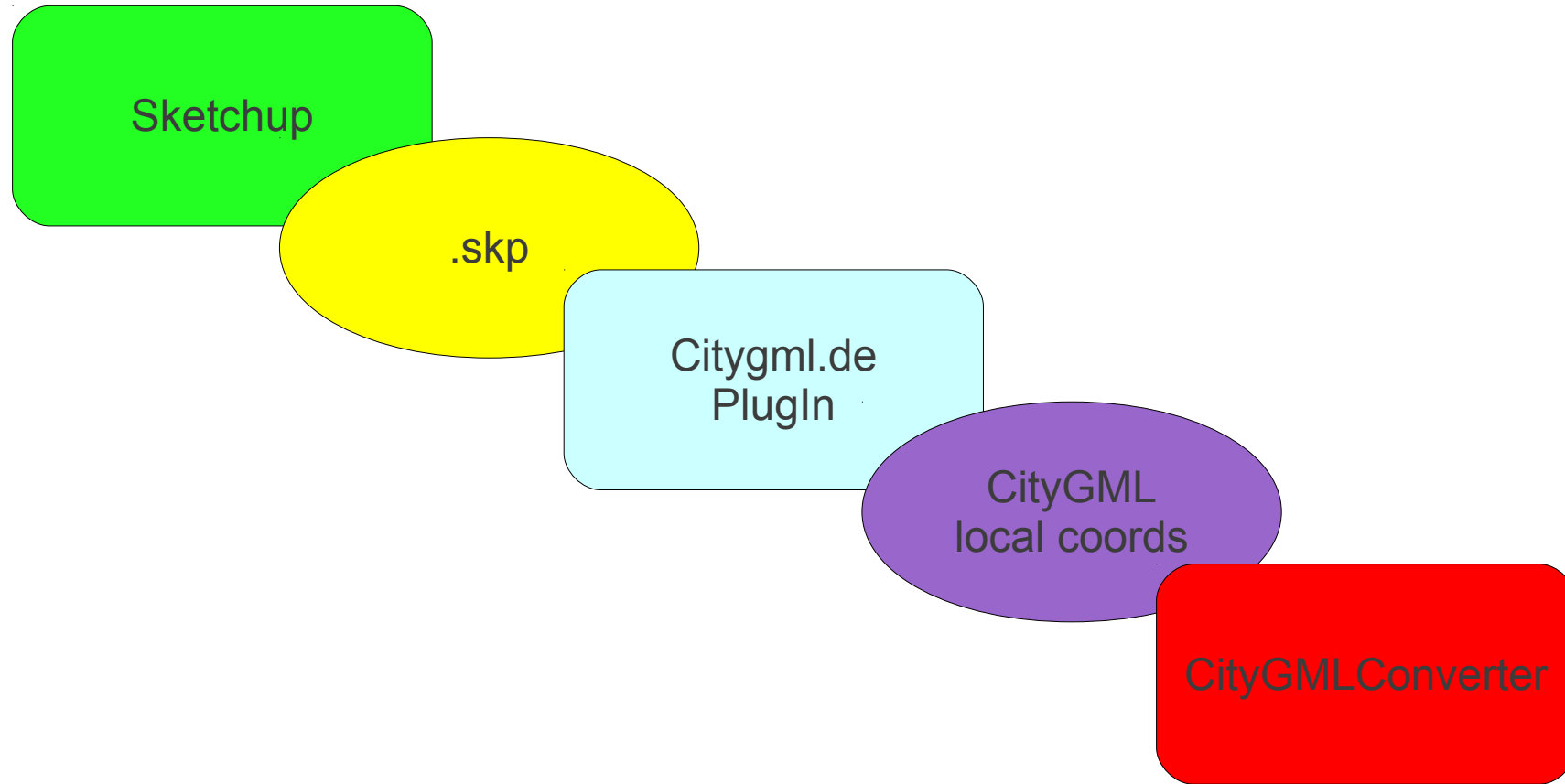
3D-Model conversion Toolchain



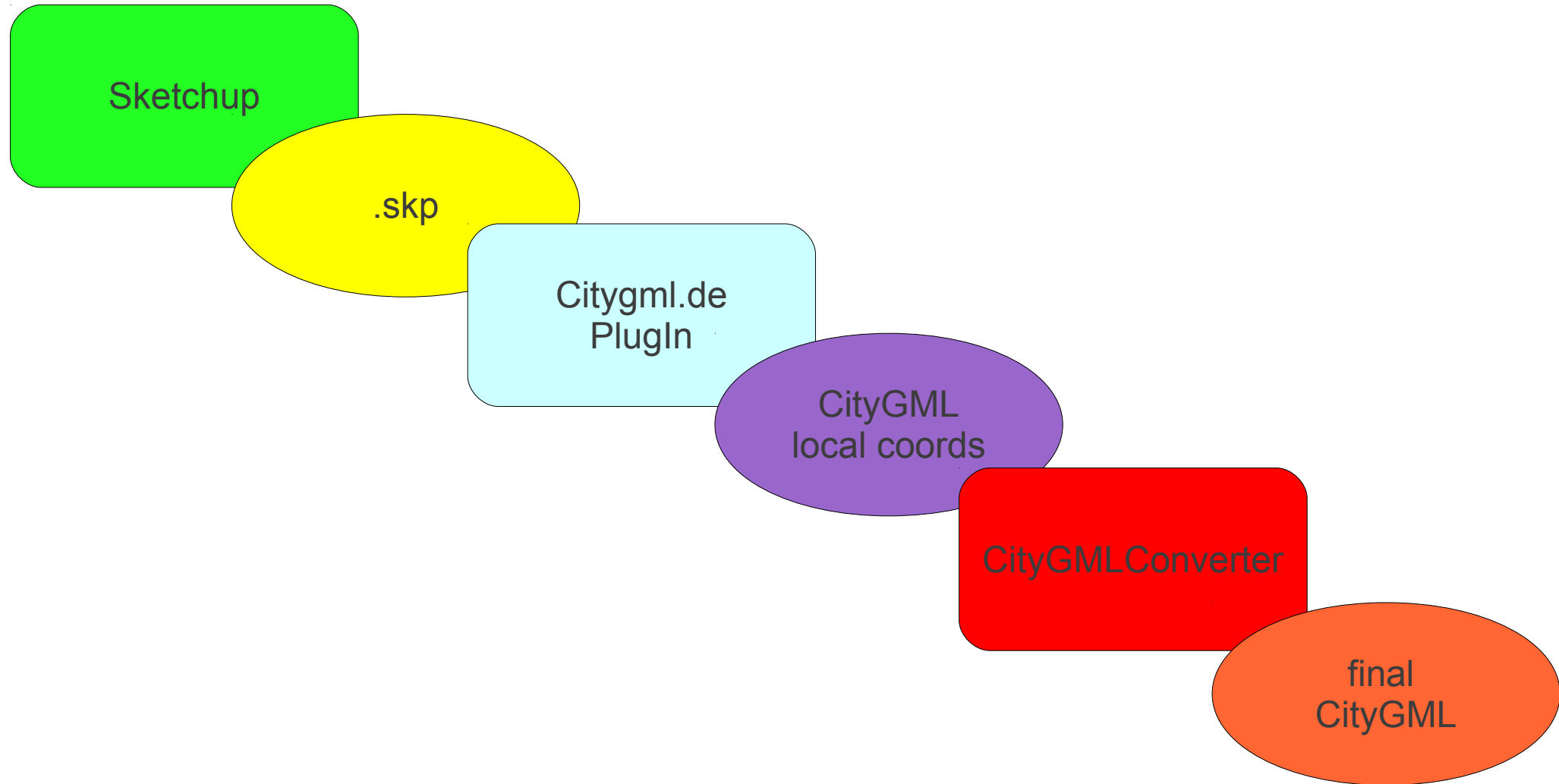
3D-Model conversion Toolchain



3D-Model conversion Toolchain



3D-Model conversion Toolchain



CityGMLConverter

CityGMLConverter

- deegree2 CRS transformation of WGS84 coordinates into projected (metric) systems.

CityGMLConverter

- deegree2 CRS transformation of WGS84 coordinates into projected (metric) systems.
- Optional fetching of height values of the building model origins from Google Elevation Web Service.

CityGMLConverter

- deegree2 CRS transformation of WGS84 coordinates into projected (metric) systems.
- Optional fetching of height values of the building model origins from Google Elevation Web Service.
- Import of the 3D models into the deegree3 backend (using the d3 DataManager).

CityGMLConverter

- Code and documentation will be available from here:

<https://github.com/cwillmes/CityGMLConverter>

CityGMLConverter

- Code and documentation will be available from here:

<https://github.com/cwillmes/CityGMLConverter>

- ... at the moment only a compiled jar File for download.

CityGMLConverter_0.1-alpha.jar

deegree3 WPVS setup

- semi automated setup
 - d3toolbox
 - Shell scripts

deegree3 WPVS setup

- semi automated setup
 - d3toolbox
 - Shell scripts
- The scripts are available from
<https://github.com/cwillmes/test-wpvs>

deegree3 WPVS setup

- semi automated setup
 - d3toolbox
 - Shell scripts
- The scripts are available from
<https://github.com/cwillmes/test-wpvs>
- Documentation in the deegree wiki

<http://wiki.deegree.org/deegreeWiki/deegree3/HowToSetupWPVS>

Browser based GUI



Future

Future

- Enhancement of the Data (more LoD3 buildings)

Future

- Enhancement of the Data (more LoD3 buildings)
- Texture rendering in the WPVS

Future

- Enhancement of the Data (more LoD3 buildings)
- Texture rendering in the WPVS
- Enhancement of the GUI

Future

- Enhancement of the Data (more LoD3 buildings)
- Texture rendering in the WPVS
- Enhancement of the GUI
- Enhancement of CityGMLConverter

Future

- Enhancement of the Data (more LoD3 buildings)
- Texture rendering in the WPVS
- Enhancement of the GUI
- Enhancement of CityGMLConverter
- Enhancement of documentation in the deegree wiki

Future

- Enhancement of the Data (more LoD3 buildings)
- Texture rendering in the WPVS
- Enhancement of the GUI
- Enhancement of CityGMLConverter
- Enhancement of documentation in the deegree wiki
- Enhancing the tutorial data set

Thank you very much for your attention!

... any **questions?**

More Information also on the project homepage....

<http://www.campusgis.de/3D>